

- 10\_ Floor finish and intermediate layer
- 09\_ Timber floor deck
- 08\_ 25 mm polymer modified screed
- 07\_ Warmup 40/60 mm Clypso Clip
- 06\_ Warmup 16 mm pipework
- 05\_ Moisture control layer
- 04\_ Rigid insulation
- 03\_ 12 mm plywood
- 02\_ 25 mm battens
- 01\_ Timber Joists  
[max 600 mm centres]

**WARMUP SILVA SYSTEM. Timber subfloor. Generic template**

REV	DATE	DESCRIPTION	DR	CH



# Warmup

The world's **best-selling** floor heating brand™

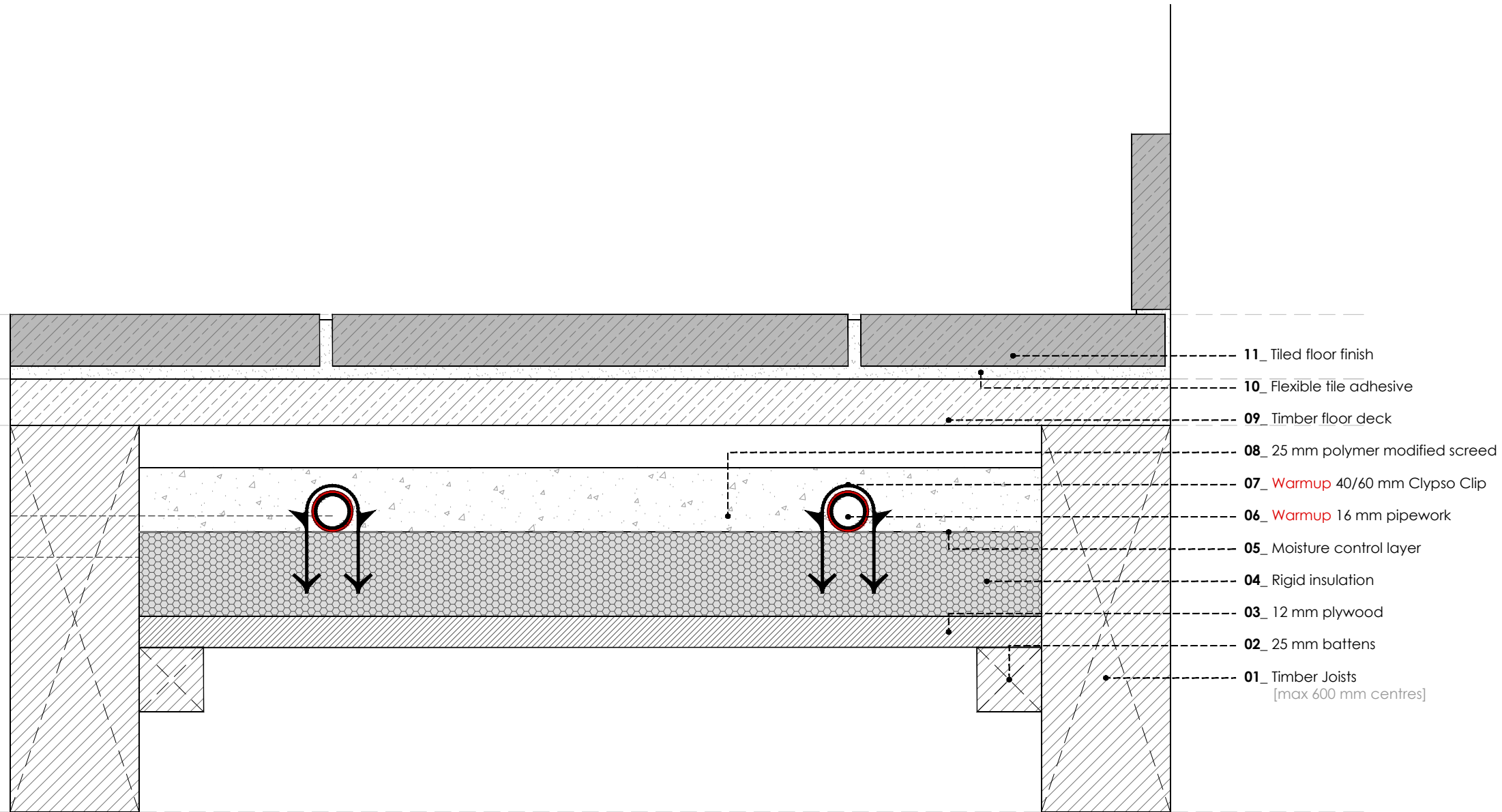
WARMUP PLC, 704 Tudor Estate, Abbey Road, London, NW10 7UW  
Tel 0845 034 8270 Fax 0208 453 6869  
cad@warmup.com projects@warmup.com www.warmup.co.uk

<b>DRAWING ISSUE STATUS</b>		<b>DRAWING NO</b>
<b>CONSTRUCTION</b>		01
<b>PROJECT</b>		
<b>SILVA JOISTED FLOOR SYSTEM</b>		
TIMBER SUBFLOOR		
<b>TITLE</b>		
GENERIC TEMPLATE		
<b>DETAILED SECTION</b>		
<b>PROJECT MANAGER</b>	<b>DRAWN</b>	<b>CHECKED</b>
	AA	AW
<b>DATE</b>	<b>SCALE</b>	<b>REVISION</b>
22.12.2016	1:50@A3	
<b>CAD FILE</b>		
20161221-H-SILVA-DET SECTIONS.DWG		

© This drawing is confidential and may not be used, copied or disclosed to anyone without permission of Warmup Plc. The Copyright of these drawings remain the property of Warmup Plc.

Do not scale from drawings, all dimensions to be checked on site.

The Warmup word and associated logos are trade marks. © Warmup Plc. 2010 - Regd. TM Nos. 1257757, 4409926, 5265707. E & OE. Registered in England No. 2955213.



- 11\_ Tiled floor finish
- 10\_ Flexible tile adhesive
- 09\_ Timber floor deck
- 08\_ 25 mm polymer modified screed
- 07\_ Warmup 40/60 mm Clypso Clip
- 06\_ Warmup 16 mm pipework
- 05\_ Moisture control layer
- 04\_ Rigid insulation
- 03\_ 12 mm plywood
- 02\_ 25 mm battens
- 01\_ Timber Joists  
[max 600 mm centres]

**WARMUP SILVA SYSTEM. Timber subfloor. Tiled floor**

REV	DATE	DESCRIPTION	DR	CH



# Warmup

The world's **best-selling** floor heating brand™

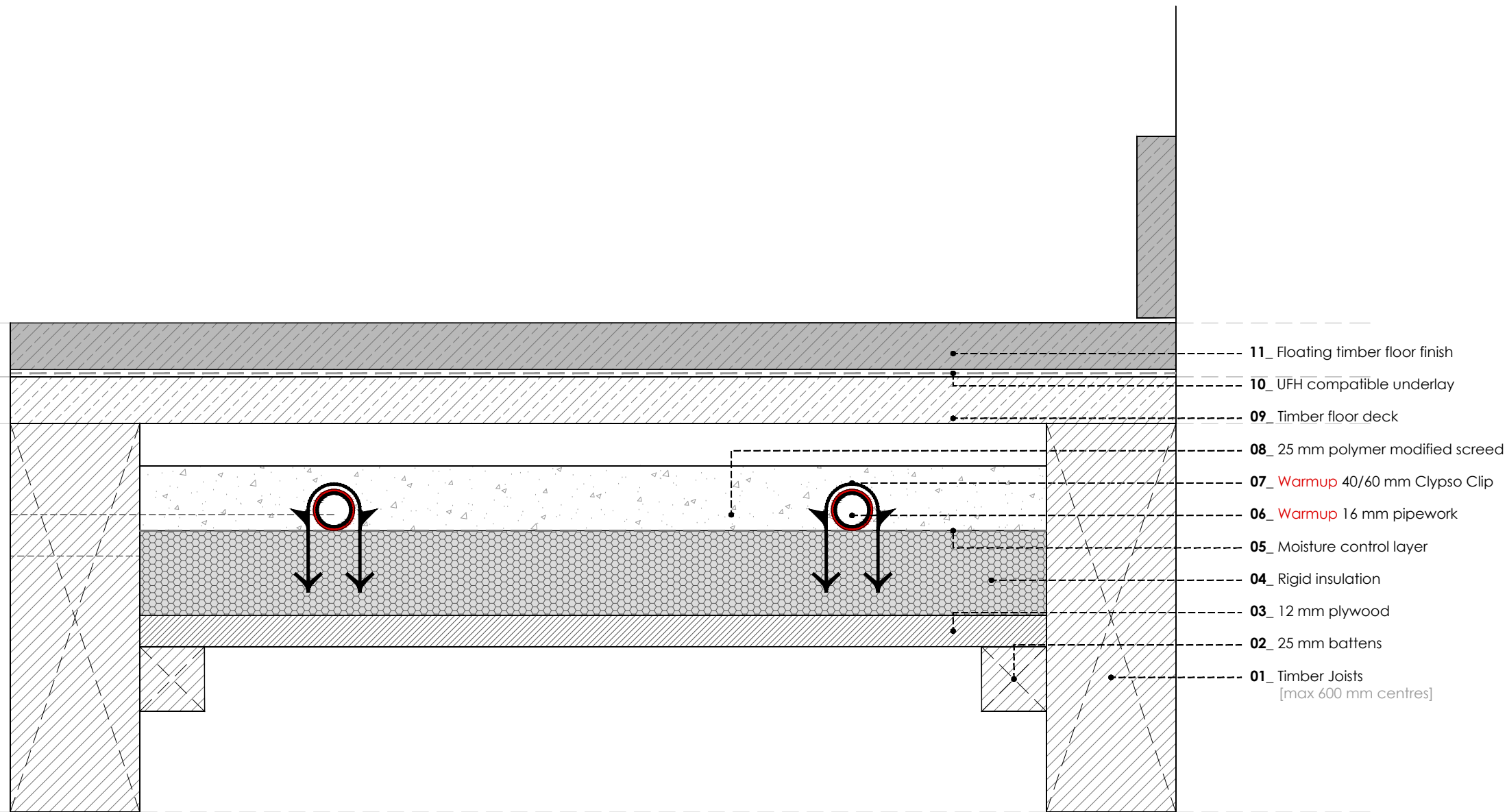
WARMUP PLC, 704 Tudor Estate, Abbey Road, London, NW10 7UW  
Tel 0845 034 8270 Fax 0208 453 6869  
[cad@warmup.com](mailto:cad@warmup.com) [projects@warmup.com](mailto:projects@warmup.com) [www.warmup.co.uk](http://www.warmup.co.uk)

<b>DRAWING ISSUE STATUS</b>		<b>DRAWING NO</b>
<b>CONSTRUCTION</b>		02
<b>PROJECT</b>		
SILVA JOISTED FLOOR SYSTEM		
TIMBER SUBFLOOR		
<b>TITLE</b>		
TILED FLOOR		
<b>DETAILED SECTION</b>		
<b>PROJECT MANAGER</b>	<b>DRAWN</b>	<b>CHECKED</b>
	AA	AW
<b>DATE</b>	<b>SCALE</b>	<b>REVISION</b>
22.12.2016	1:50@A3	
<b>CAD FILE</b>		
20161221-H-SILVA-DET SECTIONS.DWG		

© This drawing is confidential and may not be used, copied or disclosed to anyone without permission of Warmup Plc. The Copyright of these drawings remain the property of Warmup Plc.

Do not scale from drawings, all dimensions to be checked on site.

The Warmup word and associated logos are trade marks. © Warmup Plc. 2010 - Regd. TM Nos. 1257757, 4409926, 5265707. E & OE. Registered in England No. 2955213.



- 11\_ Floating timber floor finish
- 10\_ UFH compatible underlay
- 09\_ Timber floor deck
- 08\_ 25 mm polymer modified screed
- 07\_ Warmup 40/60 mm Clypso Clip
- 06\_ Warmup 16 mm pipework
- 05\_ Moisture control layer
- 04\_ Rigid insulation
- 03\_ 12 mm plywood
- 02\_ 25 mm batters
- 01\_ Timber Joists  
[max 600 mm centres]

REV	DATE	DESCRIPTION	DR	CH



# Warmup

The world's **best-selling** floor heating brand™

WARMUP PLC, 704 Tudor Estate, Abbey Road, London, NW10 7UW  
Tel 0845 034 8270 Fax 0208 453 6869  
cad@warmup.com projects@warmup.com www.warmup.co.uk

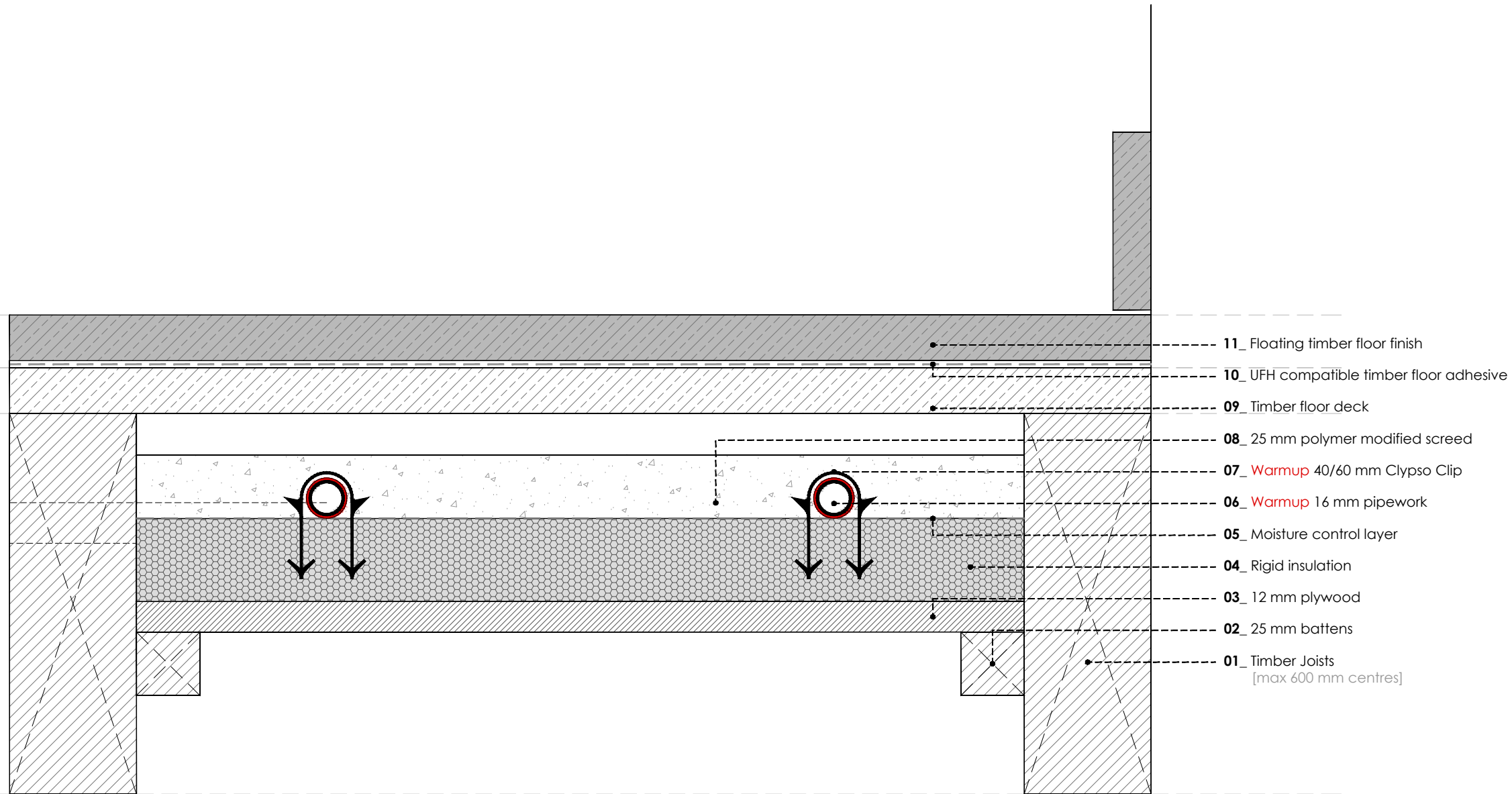
<b>DRAWING ISSUE STATUS</b>		<b>DRAWING NO</b>
<b>CONSTRUCTION</b>		03
<b>PROJECT</b>		
<b>SILVA JOISTED FLOOR SYSTEM</b>		
TIMBER SUBFLOOR		
<b>TITLE</b>		
WOOD / LAMINATE FLOOR - FLOATING		
<b>DETAILED SECTION</b>		
<b>PROJECT MANAGER</b>	<b>DRAWN</b>	<b>CHECKED</b>
	AA	AW
<b>DATE</b>	<b>SCALE</b>	<b>REVISION</b>
22.12.2016	1:50@A3	
<b>CAD FILE</b>		
20161221-H-SILVA-DET SECTIONS.DWG		

**WARMUP SILVA SYSTEM. Timber subfloor. Wood / Laminate Floor - Floating**

© This drawing is confidential and may not be used, copied or disclosed to anyone without permission of Warmup Plc. The Copyright of these drawings remain the property of Warmup Plc.

Do not scale from drawings, all dimensions to be checked on site.

The Warmup word and associated logos are trade marks. © Warmup Plc. 2010 - Regd. TM Nos. 1257757, 4409926, 5265707. E & OE. Registered in England No. 2955213.



- 11\_ Floating timber floor finish
- 10\_ UFH compatible timber floor adhesive
- 09\_ Timber floor deck
- 08\_ 25 mm polymer modified screed
- 07\_ Warmup 40/60 mm Clypso Clip
- 06\_ Warmup 16 mm pipework
- 05\_ Moisture control layer
- 04\_ Rigid insulation
- 03\_ 12 mm plywood
- 02\_ 25 mm battens
- 01\_ Timber Joists  
[max 600 mm centres]

REV	DATE	DESCRIPTION	DR	CH



# Warmup

The world's **best-selling** floor heating brand™

WARMUP PLC, 704 Tudor Estate, Abbey Road, London, NW10 7UW  
Tel 0845 034 8270 Fax 0208 453 6869  
cad@warmup.com projects@warmup.com www.warmup.co.uk

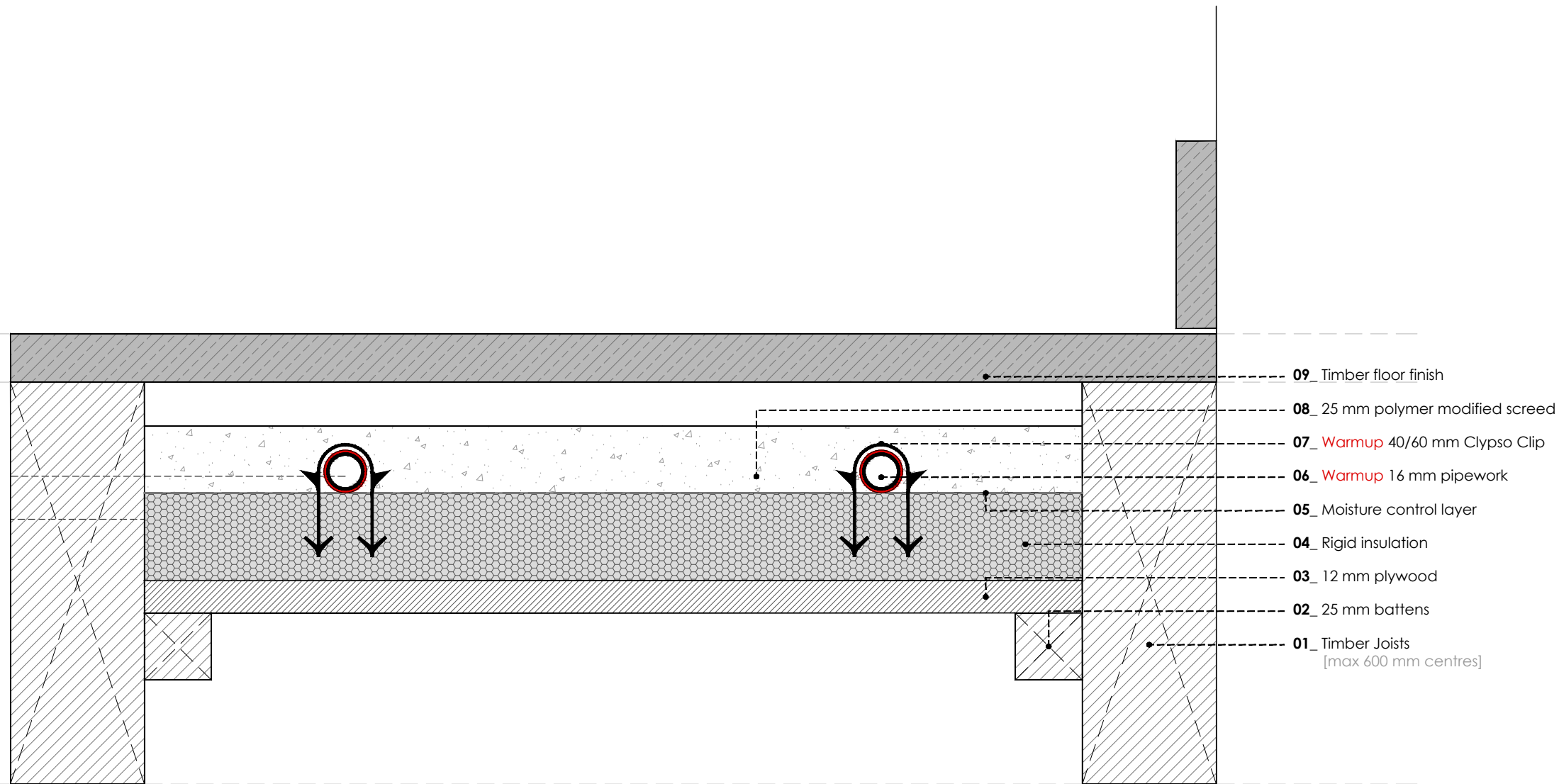
<b>DRAWING ISSUE STATUS</b>		<b>DRAWING NO</b>
<b>CONSTRUCTION</b>		04
<b>PROJECT</b>		
<b>SILVA JOISTED FLOOR SYSTEM</b>		
TIMBER SUBFLOOR		
<b>TITLE</b>		
WOOD / LAMINATE FLOOR - GLUED		
<b>DETAILED SECTION</b>		
<b>PROJECT MANAGER</b>	<b>DRAWN</b>	<b>CHECKED</b>
	AA	AW
<b>DATE</b>	<b>SCALE</b>	<b>REVISION</b>
22.12.2016	1:50@A3	
<b>CAD FILE</b>		
20161221-H-SILVA-DET SECTIONS.DWG		

**WARMUP SILVA SYSTEM. Timber subfloor. Wood / Laminate - Glued**

© This drawing is confidential and may not be used, copied or disclosed to anyone without permission of Warmup Plc. The Copyright of these drawings remain the property of Warmup Plc.

Do not scale from drawings, all dimensions to be checked on site.

The Warmup word and associated logos are trade marks. © Warmup Plc. 2010 - Regd. TM Nos. 1257757, 4409926, 5265707. E & OE. Registered in England No. 2955213.



- 09\_ Timber floor finish
- 08\_ 25 mm polymer modified screed
- 07\_ Warmup 40/60 mm Clypso Clip
- 06\_ Warmup 16 mm pipework
- 05\_ Moisture control layer
- 04\_ Rigid insulation
- 03\_ 12 mm plywood
- 02\_ 25 mm battens
- 01\_ Timber Joists  
[max 600 mm centres]

**WARMUP SILVA SYSTEM. Timber subfloor. Wood / Laminate Floor - screwed / nailed**

REV	DATE	DESCRIPTION	DR	CH



# Warmup

The world's **best-selling** floor heating brand™

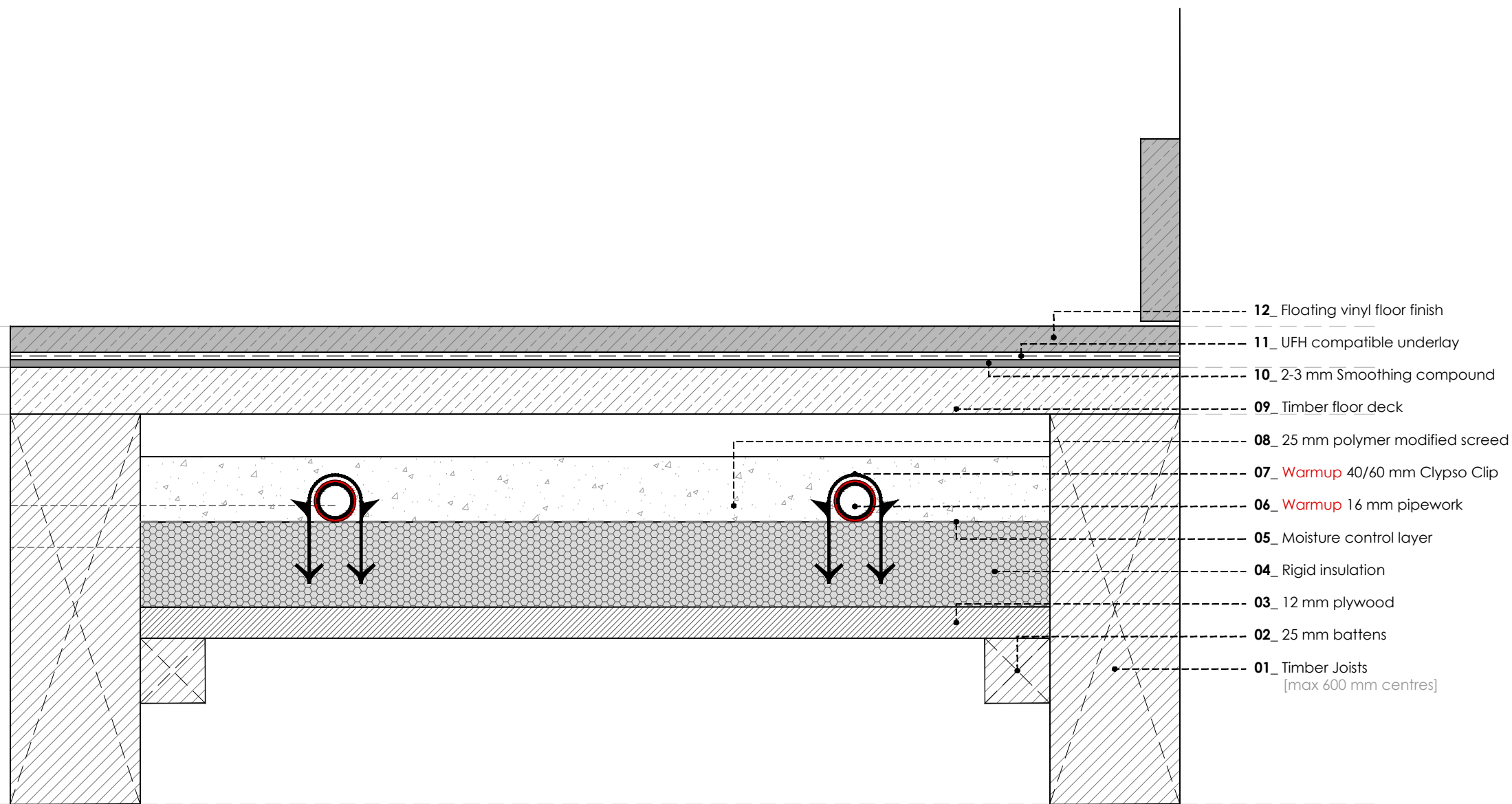
WARMUP PLC, 704 Tudor Estate, Abbey Road, London, NW10 7UW  
Tel 0845 034 8270 Fax 0208 453 6869  
cad@warmup.com projects@warmup.com www.warmup.co.uk

<b>DRAWING ISSUE STATUS</b>		<b>DRAWING NO</b>
<b>CONSTRUCTION</b>		05
<b>PROJECT</b>		
<b>SILVA JOISTED FLOOR SYSTEM</b>		
TIMBER SUBFLOOR		
<b>TITLE</b>		
WOOD/LAMINATE FLOOR-SCREWED/NAILED		
<b>DETAILED SECTION</b>		
<b>PROJECT MANAGER</b>	<b>DRAWN</b>	<b>CHECKED</b>
	AA	AW
<b>DATE</b>	<b>SCALE</b>	<b>REVISION</b>
22.12.2016	1:50@A3	
<b>CAD FILE</b>		
20161221-H-SILVA-DET SECTIONS.DWG		

© This drawing is confidential and may not be used, copied or disclosed to anyone without permission of Warmup Plc. The Copyright of these drawings remain the property of Warmup Plc.

Do not scale from drawings, all dimensions to be checked on site.

The Warmup word and associated logos are trade marks. © Warmup Plc. 2010 - Regd. TM Nos. 1257757, 4409926, 5265707. E & OE. Registered in England No. 2955213.



- 12\_ Floating vinyl floor finish
- 11\_ UFH compatible underlay
- 10\_ 2-3 mm Smoothing compound
- 09\_ Timber floor deck
- 08\_ 25 mm polymer modified screed
- 07\_ Warmup 40/60 mm Clypso Clip
- 06\_ Warmup 16 mm pipework
- 05\_ Moisture control layer
- 04\_ Rigid insulation
- 03\_ 12 mm plywood
- 02\_ 25 mm battens
- 01\_ Timber Joists  
[max 600 mm centres]

**WARMUP SILVA SYSTEM. Timber subfloor. Vinyl Floor - Floating**

REV	DATE	DESCRIPTION	DR	CH



# Warmup

The world's **best-selling** floor heating brand™

WARMUP PLC, 704 Tudor Estate, Abbey Road, London, NW10 7UW  
Tel 0845 034 8270 Fax 0208 453 6869

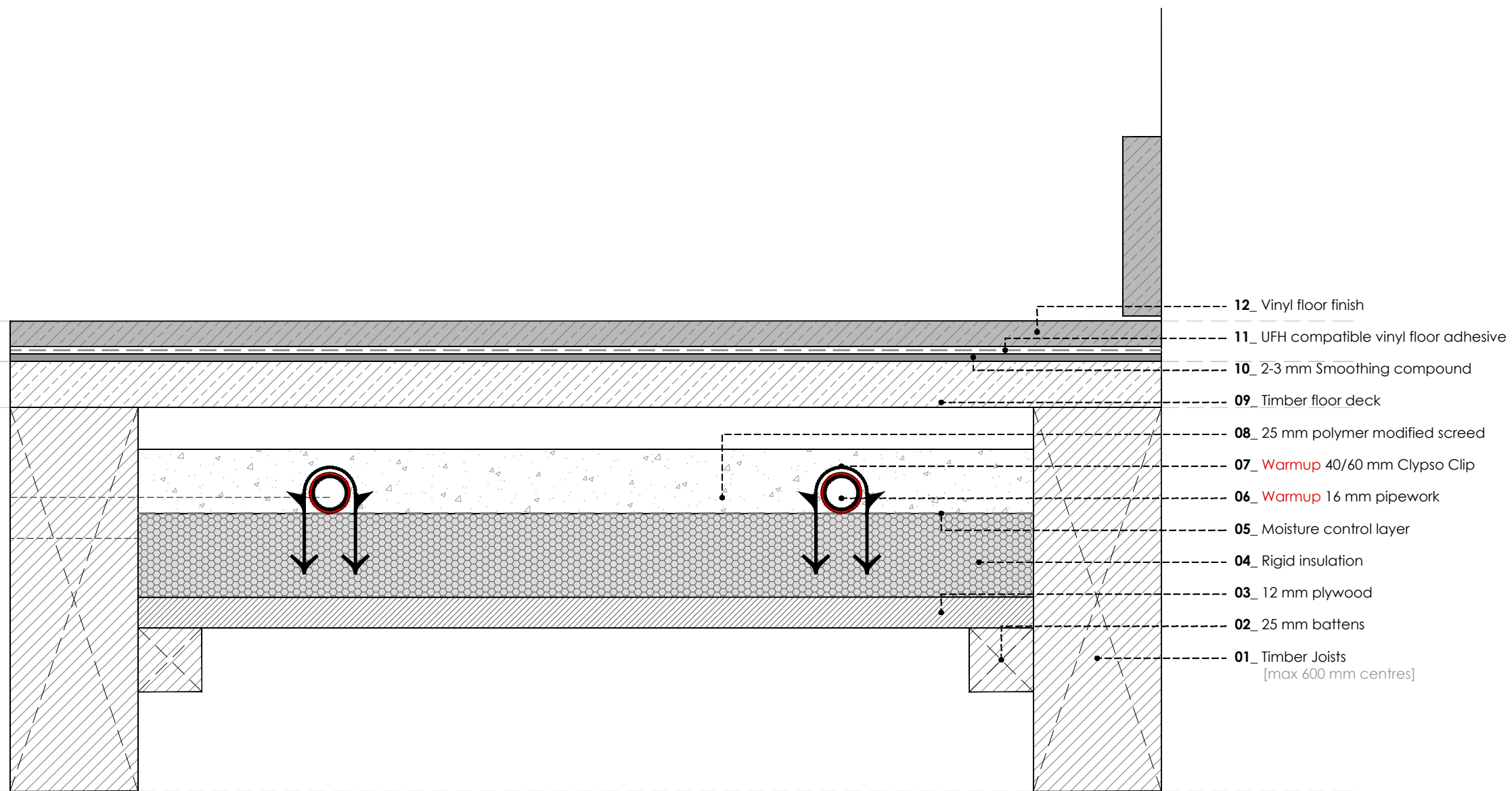
cad@warmup.com projects@warmup.com www.warmup.co.uk

<b>DRAWING ISSUE STATUS</b>		<b>DRAWING NO</b>
<b>CONSTRUCTION</b>		06
<b>PROJECT</b>		
<b>SILVA JOISTED FLOOR SYSTEM</b>		
TIMBER SUBFLOOR		
<b>TITLE</b>		
VINYL FLOOR - FLOATING		
<b>DETAILED SECTION</b>		
<b>PROJECT MANAGER</b>	<b>DRAWN</b>	<b>CHECKED</b>
	AA	AW
<b>DATE</b>	<b>SCALE</b>	<b>REVISION</b>
22.12.2016	1:50@A3	
<b>CAD FILE</b>		
20161221-H-SILVA-DET SECTIONS.DWG		

© This drawing is confidential and may not be used, copied or disclosed to anyone without permission of Warmup Plc. The Copyright of these drawings remain the property of Warmup Plc.

Do not scale from drawings, all dimensions to be checked on site.

The Warmup word and associated logos are trade marks. © Warmup Plc. 2010 - Regd. TM Nos. 1257757, 4409926, 5265707. E & OE. Registered in England No. 2955213.



REV	DATE	DESCRIPTION	DR	CH



# Warmup

The world's **best-selling** floor heating brand™

WARMUP PLC, 704 Tudor Estate, Abbey Road, London, NW10 7UW  
Tel 0845 034 8270 Fax 0208 453 6869

cad@warmup.com projects@warmup.com www.warmup.co.uk

<b>DRAWING ISSUE STATUS</b>		<b>DRAWING NO</b>
<b>CONSTRUCTION</b>		07
<b>PROJECT</b>		
<b>SILVA JOISTED FLOOR SYSTEM</b>		
TIMBER SUBFLOOR		
<b>TITLE</b>		
VINYL FLOOR - GLUED		
<b>DETAILED SECTION</b>		
<b>PROJECT MANAGER</b>	<b>DRAWN</b>	<b>CHECKED</b>
	AA	AW
<b>DATE</b>	<b>SCALE</b>	<b>REVISION</b>
22.12.2016	1:50@A3	
<b>CAD FILE</b>		
20161221-H-SILVA-DET SECTIONS.DWG		

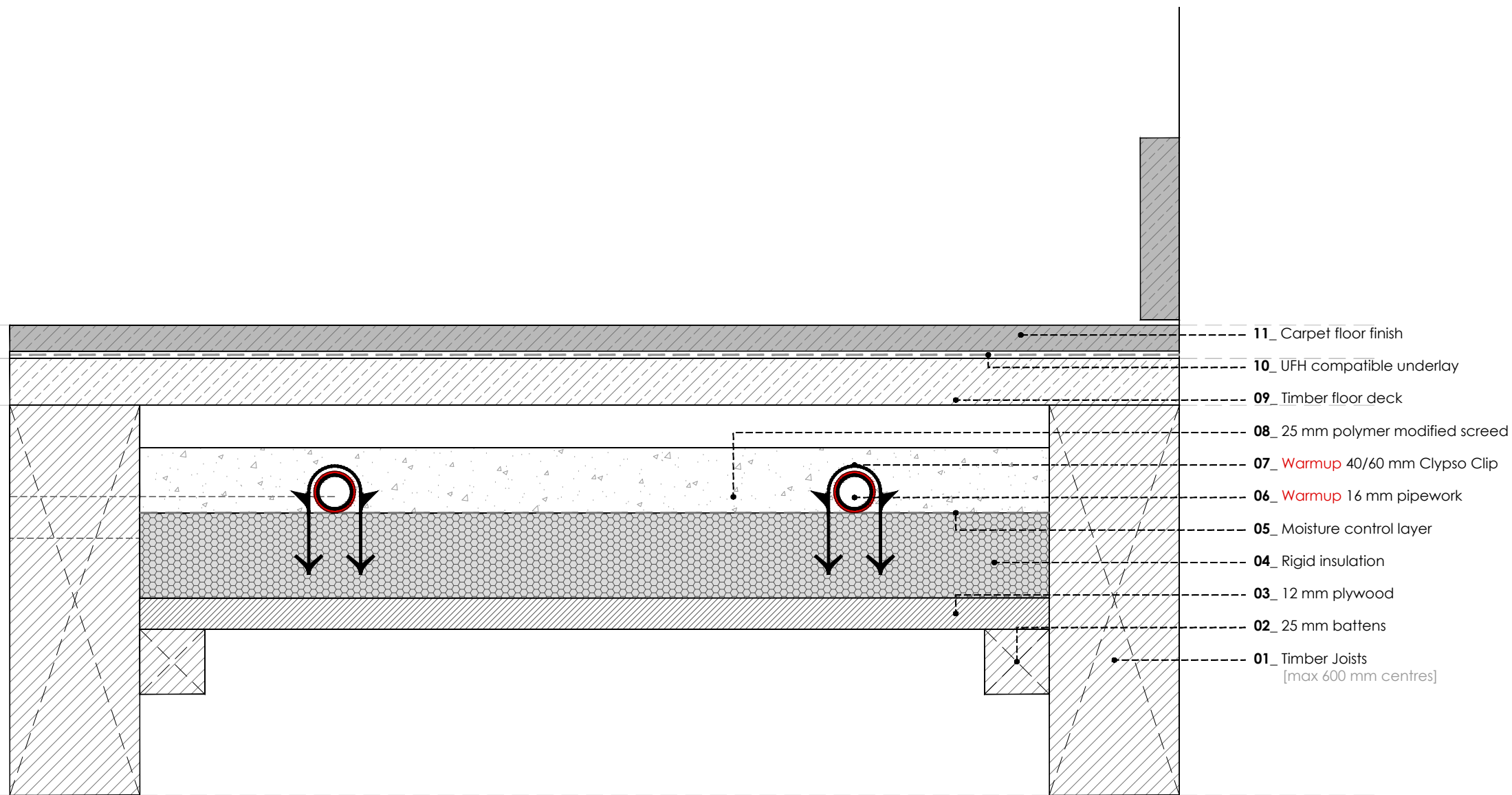
**WARMUP SILVA SYSTEM. Timber subfloor. Vinyl Floor - Glued**

© This drawing is confidential and may not be used, copied or disclosed to anyone without permission of Warmup Plc. The Copyright of these drawings remain the property of Warmup Plc.

Do not scale from drawings, all dimensions to be checked on site.

The Warmup word and associated logos are trade marks. © Warmup Plc. 2010 - Regd. TM Nos. 1257757, 4409926, 5265707. E & OE. Registered in England No. 2955213.





REV	DATE	DESCRIPTION	DR	CH



# Warmup

The world's **best-selling** floor heating brand™

WARMUP PLC, 704 Tudor Estate, Abbey Road, London, NW10 7UW  
Tel 0845 034 8270 Fax 0208 453 6869

cad@warmup.com projects@warmup.com www.warmup.co.uk

<b>DRAWING ISSUE STATUS</b>		<b>DRAWING NO</b>
<b>CONSTRUCTION</b>		08
<b>PROJECT</b>		
<b>SILVA JOISTED FLOOR SYSTEM</b>		
TIMBER SUBFLOOR		
<b>TITLE</b>		
CARPET FLOOR		
<b>DETAILED SECTION</b>		
<b>PROJECT MANAGER</b>	<b>DRAWN</b>	<b>CHECKED</b>
	AA	AW
<b>DATE</b>	<b>SCALE</b>	<b>REVISION</b>
22.12.2016	1:50@A3	
<b>CAD FILE</b>		
20161221-H-SILVA-DET SECTIONS.DWG		

**WARMUP SILVA SYSTEM. Timber subfloor. Carpet floor**

© This drawing is confidential and may not be used, copied or disclosed to anyone without permission of Warmup Plc. The Copyright of these drawings remain the property of Warmup Plc.

Do not scale from drawings, all dimensions to be checked on site.

The Warmup word and associated logos are trade marks. © Warmup Plc. 2010 - Regd. TM Nos. 1257757, 4409926, 5265707. E & OE. Registered in England No. 2955213.