

# 5iE

The Smartest Smart Thermostat

## Boiler Receiver Installation Manual



Technical Helpline  
**0345 345 2288**

**Warmup**

## 5iE - Boiler Receiver

When installing the **Boiler receiver** Warmup recommends it is either mounted onto a 1 gang surface box or mounted directly to a stud wall.

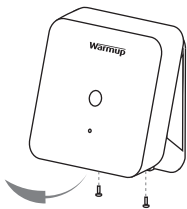
The **Boiler receiver** in most situations should be installed within the boilers vicinity.

Large metal objects such as the boiler, hot water cylinder or radiators, should be at least 300mm away from the **Boiler Receiver** and not directly between it and the 5iE.



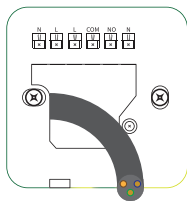
This product uses mains voltage electricity and work should only be carried out by a qualified electrician. Electrical installation to be in accordance with latest edition of BS7671 Wiring Regulations and appropriate Statutory Regulations.

1



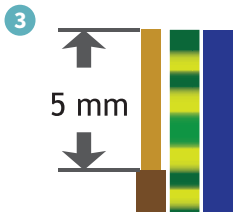
- Remove the two screws from the base of the Boiler receiver
- Gentle pull the faceplate from the bottom and slide up to remove from the baseplate

2

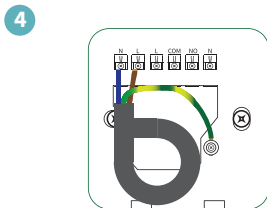


- Feed the connecting wires through the centre of the baseplate
- Screw the baseplate to the backbox (or wall if cable are within the void)

## 5iE - Boiler Receiver

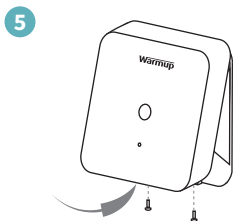


- Remove the wire sheathing as shown above
- Ensure no strands of the wire are frayed

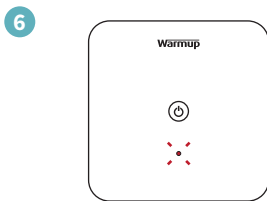


- Loosen the terminal screws slightly
- Inserted the wires into the relvent terminals, as per the wiring diagrams
- Ensure all terminals are tightened sufficiently

**Note:** Ensure the terminal is only on the wire and not the sheathing



- Re-attach the faceplate by gently placing the top on and sliding down, before pushing the bottom on
- Replace the two screws from the base of the Boiler receiver



- Switch the power supply back on to boiler
- The Boiler receiver will have a blinking red LED, indicating that it is unpaired