

REV	DATE	DESCRIPTION	DR	CH



# Warmup

The world's **best-selling** floor heating brand™

WARMUP PLC, 704 Tudor Estate, Abbey Road, London, NW10 7UW  
 Tel 0845 034 8270 Fax 0208 453 6869  
[cad@warmup.com](mailto:cad@warmup.com) [projects@warmup.com](mailto:projects@warmup.com) [www.warmup.co.uk](http://www.warmup.co.uk)

<b>DRAWING ISSUE STATUS</b>		<b>DRAWING NO</b>
<b>CONSTRUCTION</b>		09
<b>PROJECT</b>		
<b>CONTURA FLOATING FLOOR SYSTEM</b>		
TIMBER SUBFLOOR		
<b>TITLE</b>		
GENERIC TEMPLATE		
<b>DETAILED SECTION</b>		
<b>PROJECT MANAGER</b>	<b>DRAWN</b>	<b>CHECKED</b>
	AA	AW
<b>DATE</b>	<b>SCALE</b>	<b>REVISION</b>
21.02.2017	1:50@A3	
<b>CAD FILE</b>		
20170221-H-CONTURA-DET SECTIONS.DWG		

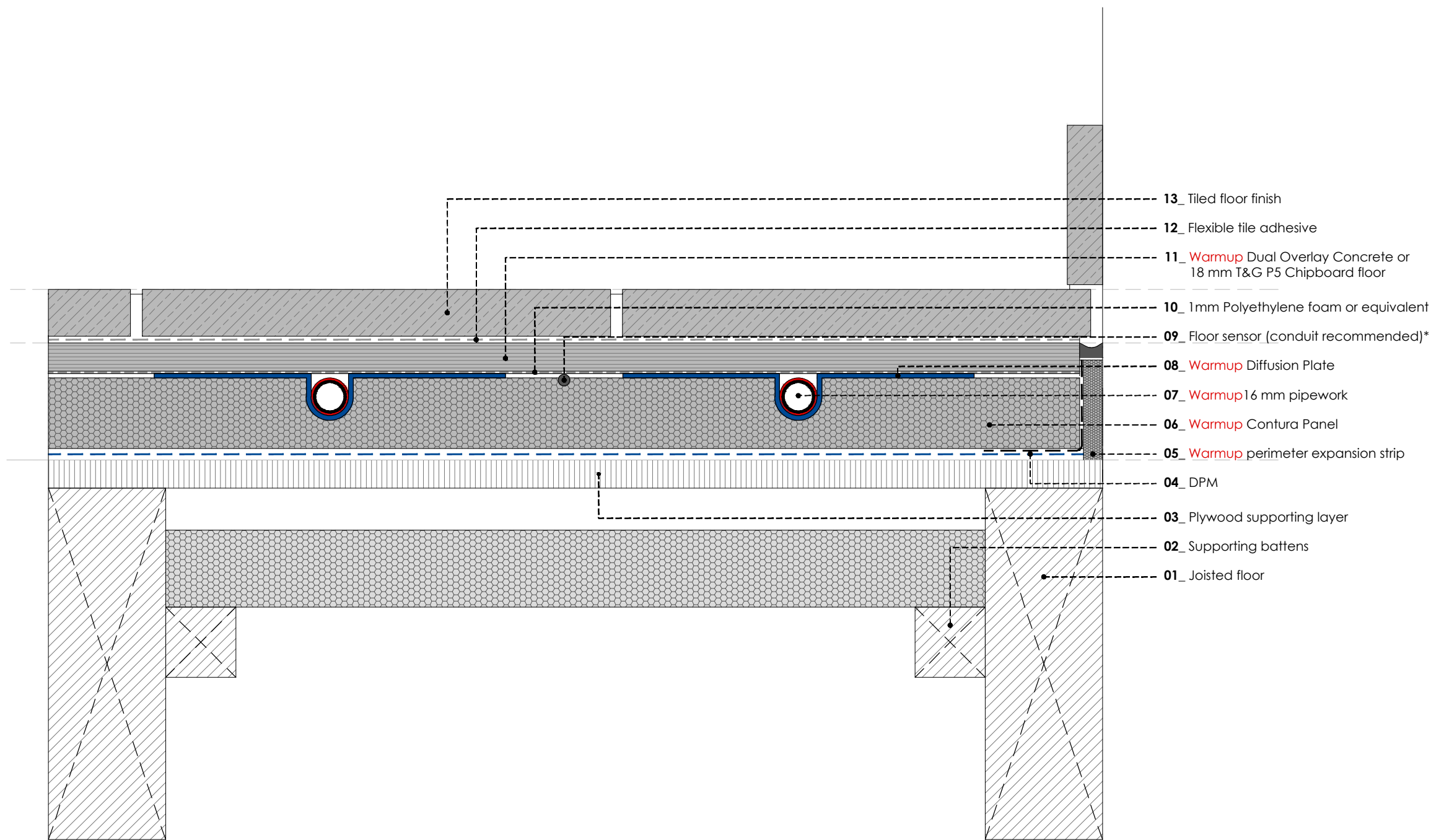
## WARMUP CONTURA FLOATING FLOOR SYSTEM. Timber subfloor. Generic template

\* The aluminium plates should be trimmed to allow 50mm spacing between the sensor and the diffuser plates.

© This drawing is confidential and may not be used, copied or disclosed to anyone without permission of Warmup Plc. The Copyright of these drawings remain the property of Warmup Plc.

Do not scale from drawings, all dimensions to be checked on site.

The Warmup word and associated logos are trade marks. © Warmup Plc. 2010 - Regd. TM Nos. 1257757, 4409926, 5265707. E & OE. Registered in England No. 2955213.



REV	DATE	DESCRIPTION	DR	CH



# Warmup

The world's **best-selling** floor heating brand™

WARMUP PLC, 704 Tudor Estate, Abbey Road, London, NW10 7UW  
 Tel 0845 034 8270 Fax 0208 453 6869  
[cad@warmup.com](mailto:cad@warmup.com) [projects@warmup.com](mailto:projects@warmup.com) [www.warmup.co.uk](http://www.warmup.co.uk)

<b>DRAWING ISSUE STATUS</b>		<b>DRAWING NO</b>
<b>CONSTRUCTION</b>		10
<b>PROJECT</b>		
<b>CONTURA FLOATING FLOOR SYSTEM</b>		
TIMBER SUBFLOOR		
<b>TITLE</b>		
TILED FLOOR		
<b>DETAILED SECTION</b>		
<b>PROJECT MANAGER</b>	<b>DRAWN</b>	<b>CHECKED</b>
	AA	AW
<b>DATE</b>	<b>SCALE</b>	<b>REVISION</b>
21.02.2017	1:50@A3	
<b>CAD FILE</b>		
20170221-H-CONTURA-DET SECTIONS.DWG		

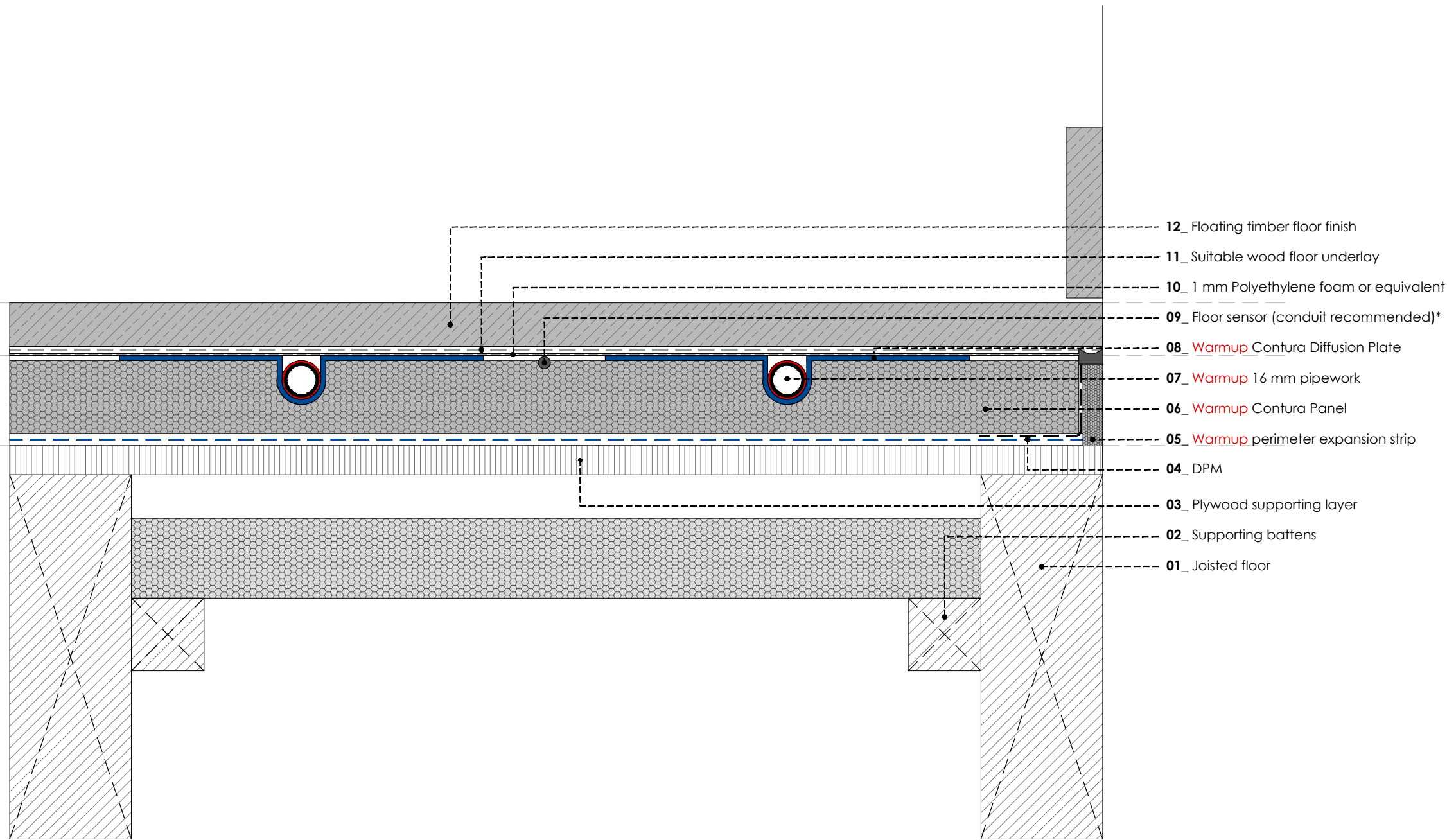
## WARMUP CONTURA FLOATING FLOOR SYSTEM. Timber subfloor. Tiled floor

\* The aluminium plates should be trimmed to allow 50mm spacing between the sensor and the diffuser plates.

© This drawing is confidential and may not be used, copied or disclosed to anyone without permission of Warmup Plc. The Copyright of these drawings remain the property of Warmup Plc.

Do not scale from drawings, all dimensions to be checked on site.

The Warmup word and associated logos are trade marks. © Warmup Plc. 2010 - Regd. TM Nos. 1257757, 4409926, 5265707. E & OE. Registered in England No. 2955213.



- 12\_ Floating timber floor finish
- 11\_ Suitable wood floor underlay
- 10\_ 1 mm Polyethylene foam or equivalent
- 09\_ Floor sensor (conduit recommended)\*
- 08\_ Warmup Contura Diffusion Plate
- 07\_ Warmup 16 mm pipework
- 06\_ Warmup Contura Panel
- 05\_ Warmup perimeter expansion strip
- 04\_ DPM
- 03\_ Plywood supporting layer
- 02\_ Supporting battens
- 01\_ Joisted floor

REV	DATE	DESCRIPTION	DR	CH



# Warmup

The world's **best-selling** floor heating brand™

WARMUP PLC, 704 Tudor Estate, Abbey Road, London, NW10 7UW  
 Tel 0845 034 8270 Fax 0208 453 6869  
[cad@warmup.com](mailto:cad@warmup.com) [projects@warmup.com](mailto:projects@warmup.com) [www.warmup.co.uk](http://www.warmup.co.uk)

<b>DRAWING ISSUE STATUS</b>		<b>DRAWING NO</b>
<b>CONSTRUCTION</b>		11
<b>PROJECT</b>		
<b>CONTURA FLOATING FLOOR SYSTEM</b>		
TIMBER SUBFLOOR		
<b>TITLE</b>		
WOOD / LAMINATE FLOOR - FLOATING		
<b>DETAILED SECTION</b>		
<b>PROJECT MANAGER</b>	<b>DRAWN</b>	<b>CHECKED</b>
	AA	AW
<b>DATE</b>	<b>SCALE</b>	<b>REVISION</b>
21.02.2017	1:50@A3	
<b>CAD FILE</b>		
20170221-H-CONTURA-DET SECTIONS.DWG		

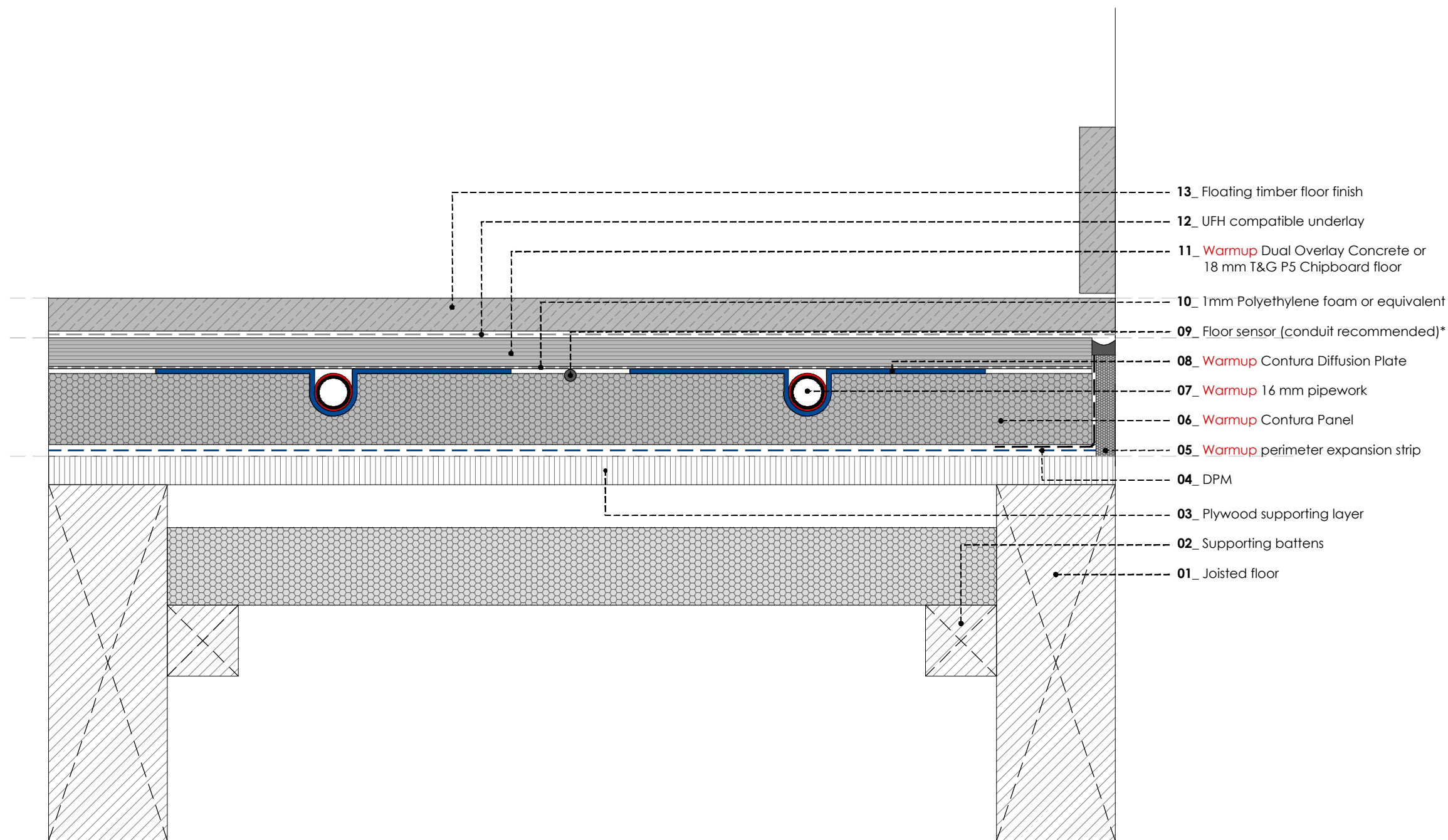
## WARMUP CONTURA FLOATING FLOOR SYSTEM. Timber subfloor. Wood / Laminate floor - floating

\* The aluminium plates should be trimmed to allow 50mm spacing between the sensor and the diffuser plates.

© This drawing is confidential and may not be used, copied or disclosed to anyone without permission of Warmup Plc. The Copyright of these drawings remain the property of Warmup Plc.

Do not scale from drawings, all dimensions to be checked on site.

The Warmup word and associated logos are trade marks. © Warmup Plc. 2010 - Regd. TM Nos. 1257757, 4409926, 5265707. E & OE. Registered in England No. 2955213.



- 13\_ Floating timber floor finish
- 12\_ UFH compatible underlay
- 11\_ Warmup Dual Overlay Concrete or 18 mm T&G P5 Chipboard floor
- 10\_ 1mm Polyethylene foam or equivalent
- 09\_ Floor sensor (conduit recommended)\*
- 08\_ Warmup Contura Diffusion Plate
- 07\_ Warmup 16 mm pipework
- 06\_ Warmup Contura Panel
- 05\_ Warmup perimeter expansion strip
- 04\_ DPM
- 03\_ Plywood supporting layer
- 02\_ Supporting battens
- 01\_ Joisted floor

REV	DATE	DESCRIPTION	DR	CH



# Warmup

The world's **best-selling** floor heating brand™

WARMUP PLC, 704 Tudor Estate, Abbey Road, London, NW10 7UW  
Tel 0845 034 8270 Fax 0208 453 6869  
cad@warmup.com projects@warmup.com www.warmup.co.uk

<b>DRAWING ISSUE STATUS</b>	<b>DRAWING NO</b>
<b>CONSTRUCTION</b>	12

**PROJECT**  
**CONTURA FLOATING FLOOR SYSTEM**  
 TIMBER SUBFLOOR

**TITLE**  
 WOOD/LAMINATE FLOOR(14mm)-FLOATING  
**DETAILED SECTION**

<b>PROJECT MANAGER</b>	<b>DRAWN</b>	<b>CHECKED</b>
	AA	AW

<b>DATE</b>	<b>SCALE</b>	<b>REVISION</b>
21.02.2017	1:50@A3	

**CAD FILE**  
 20170221-H-CONTURA-DET SECTIONS.DWG

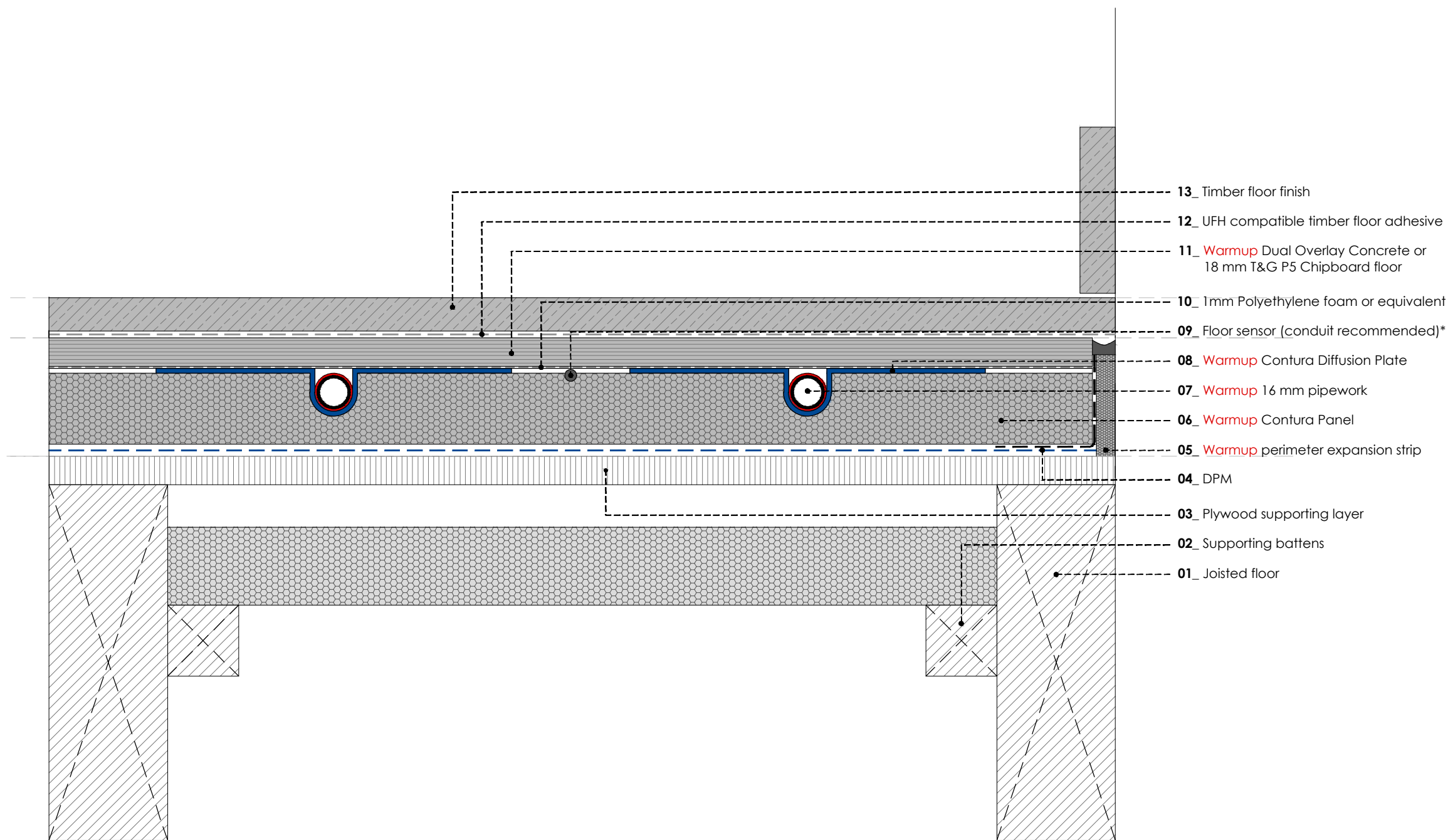
© This drawing is confidential and may not be used, copied or disclosed to anyone without permission of Warmup Plc. The Copyright of these drawings remain the property of Warmup Plc.

Do not scale from drawings, all dimensions to be checked on site.

The Warmup word and associated logos are trade marks. © Warmup Plc. 2010 - Regd. TM Nos. 1257757, 4409926, 5265707. E & OE. Registered in England No. 2955213.

## WARMUP CONTURA FLOATING FLOOR SYSTEM. Timber subfloor. Wood / Laminate floor less than 14 mm - Floating

\* The aluminium plates should be trimmed to allow 50mm spacing between the sensor and the diffuser plates.



- 13\_ Timber floor finish
- 12\_ UFH compatible timber floor adhesive
- 11\_ Warmup Dual Overlay Concrete or 18 mm T&G P5 Chipboard floor
- 10\_ 1mm Polyethylene foam or equivalent
- 09\_ Floor sensor (conduit recommended)\*
- 08\_ Warmup Contura Diffusion Plate
- 07\_ Warmup 16 mm pipework
- 06\_ Warmup Contura Panel
- 05\_ Warmup perimeter expansion strip
- 04\_ DPM
- 03\_ Plywood supporting layer
- 02\_ Supporting battens
- 01\_ Joisted floor

REV	DATE	DESCRIPTION	DR	CH



# Warmup

The world's **best-selling** floor heating brand™

WARMUP PLC, 704 Tudor Estate, Abbey Road, London, NW10 7UW  
Tel 0845 034 8270 Fax 0208 453 6869  
cad@warmup.com projects@warmup.com www.warmup.co.uk

<b>DRAWING ISSUE STATUS</b>		<b>DRAWING NO</b>
<b>CONSTRUCTION</b>		13
<b>PROJECT</b>		
<b>CONTURA FLOATING FLOOR SYSTEM</b>		
TIMBER SUBFLOOR		
<b>TITLE</b>		
WOOD / LAMINATE FLOOR - GLUED		
<b>DETAILED SECTION</b>		
<b>PROJECT MANAGER</b>	<b>DRAWN</b>	<b>CHECKED</b>
	AA	AW
<b>DATE</b>	<b>SCALE</b>	<b>REVISION</b>
21.02.2017	1:50@A3	
<b>CAD FILE</b>		
20170221-H-CONTURA-DET SECTIONS.DWG		

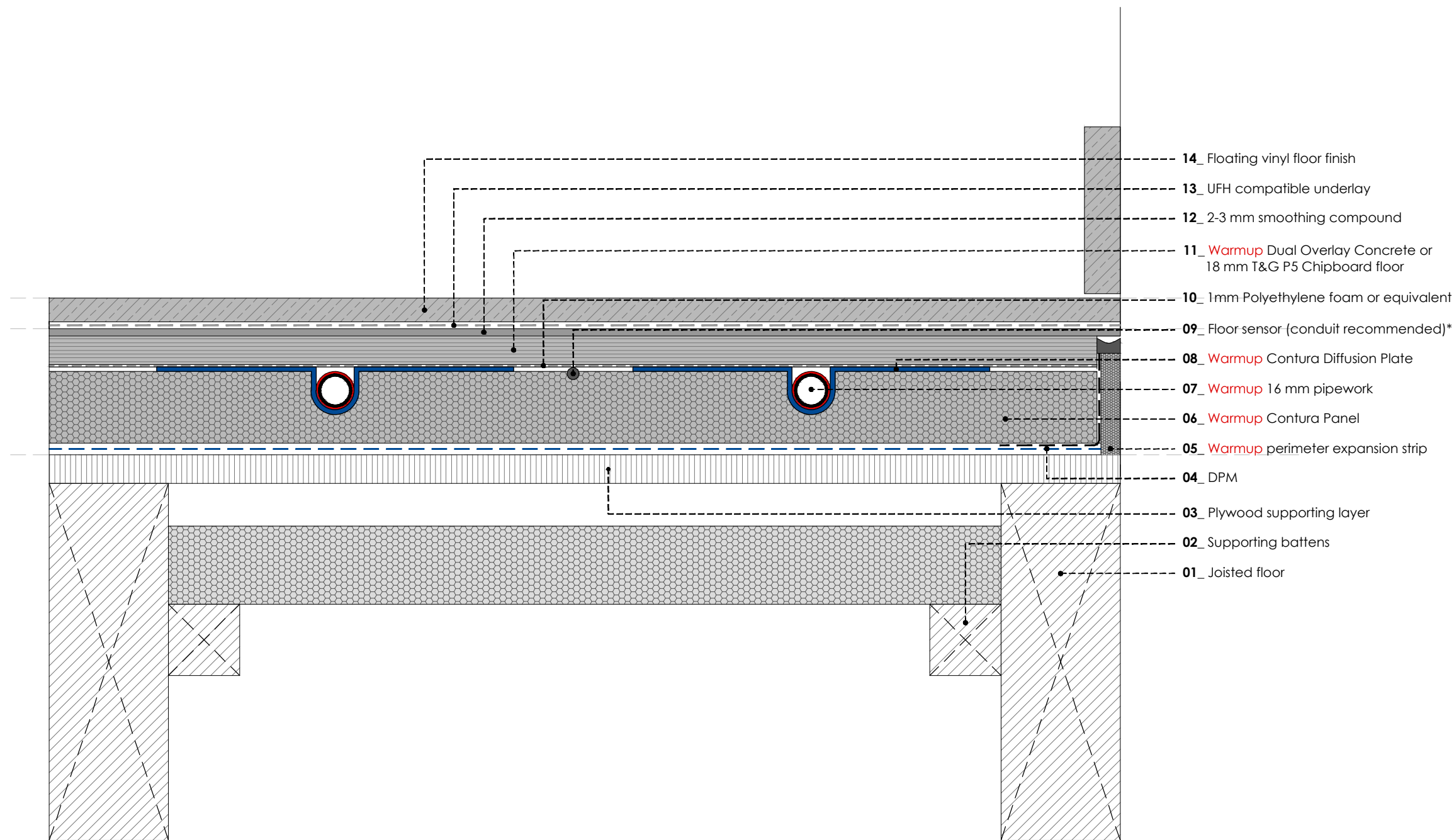
## WARMUP CONTURA FLOATING FLOOR SYSTEM. Timber subfloor. Wood / Laminate floor - glued

\* The aluminium plates should be trimmed to allow 50mm spacing between the sensor and the diffuser plates.

© This drawing is confidential and may not be used, copied or disclosed to anyone without permission of Warmup Plc. The Copyright of these drawings remain the property of Warmup Plc.

Do not scale from drawings, all dimensions to be checked on site.

The Warmup word and associated logos are trade marks. © Warmup Plc. 2010 - Regd. TM Nos. 1257757, 4409926, 5265707. E & OE. Registered in England No. 2955213.



- 14\_ Floating vinyl floor finish
- 13\_ UFH compatible underlay
- 12\_ 2-3 mm smoothing compound
- 11\_ Warmup Dual Overlay Concrete or 18 mm T&G P5 Chipboard floor
- 10\_ 1mm Polyethylene foam or equivalent
- 09\_ Floor sensor (conduit recommended)\*
- 08\_ Warmup Contura Diffusion Plate
- 07\_ Warmup 16 mm pipework
- 06\_ Warmup Contura Panel
- 05\_ Warmup perimeter expansion strip
- 04\_ DPM
- 03\_ Plywood supporting layer
- 02\_ Supporting battens
- 01\_ Joisted floor

REV	DATE	DESCRIPTION	DR	CH



# Warmup

The world's **best-selling** floor heating brand™

WARMUP PLC, 704 Tudor Estate, Abbey Road, London, NW10 7UW  
Tel 0845 034 8270 Fax 0208 453 6869  
cad@warmup.com projects@warmup.com www.warmup.co.uk

<b>DRAWING ISSUE STATUS</b>		<b>DRAWING NO</b>
<b>CONSTRUCTION</b>		14
<b>PROJECT</b>		
<b>CONTURA FLOATING FLOOR SYSTEM</b>		
TIMBER SUBFLOOR		
<b>TITLE</b>		
VINYL FLOOR - FLOATING		
<b>DETAILED SECTION</b>		
<b>PROJECT MANAGER</b>	<b>DRAWN</b>	<b>CHECKED</b>
	AA	AW
<b>DATE</b>	<b>SCALE</b>	<b>REVISION</b>
21.02.2017	1:50@A3	
<b>CAD FILE</b>		
20170221-H-CONTURA-DET SECTIONS.DWG		

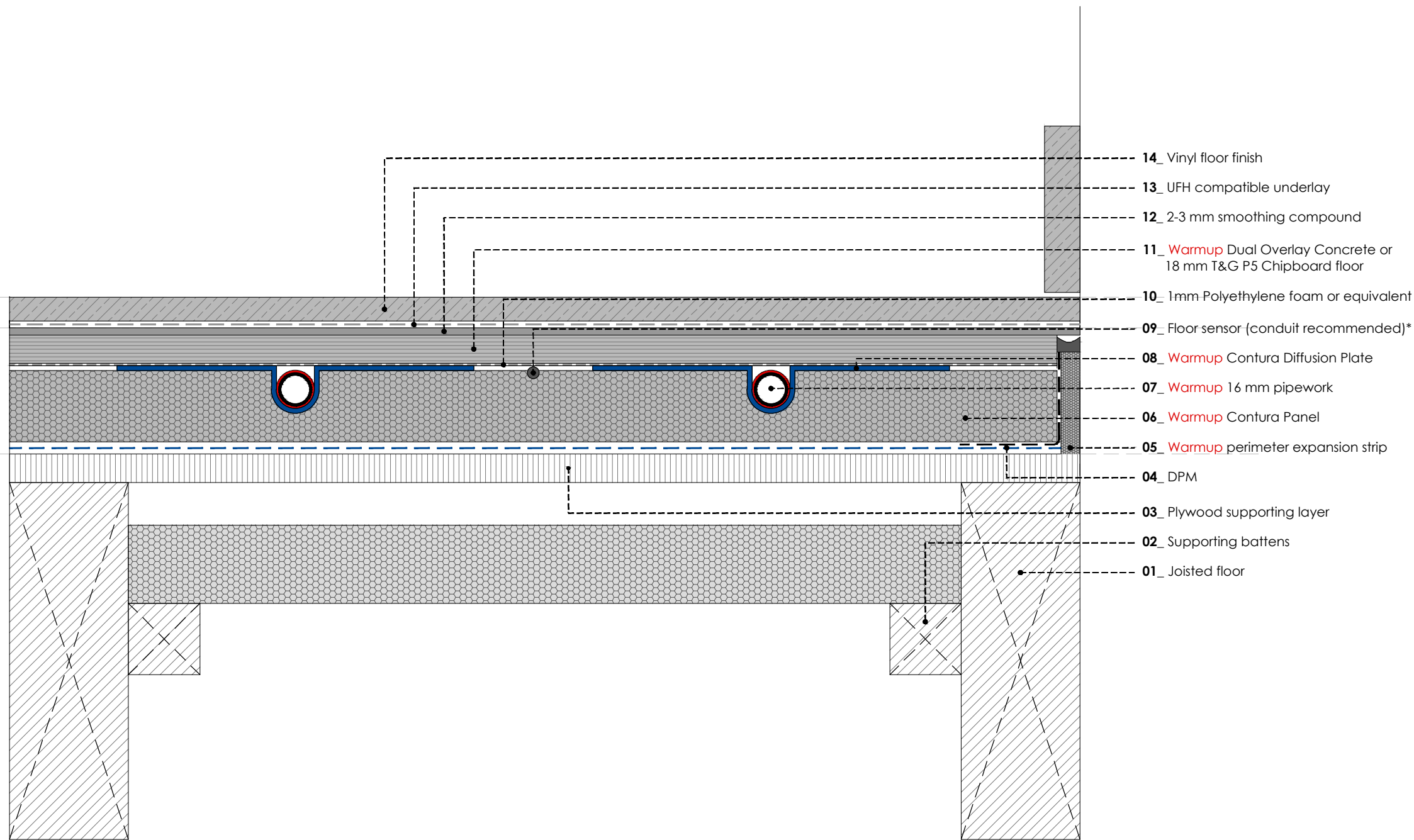
**WARMUP** CONTURA FLOATING FLOOR SYSTEM. Timber subfloor. Vinyl floor - floating

\* The aluminium plates should be trimmed to allow 50mm spacing between the sensor and the diffuser plates.

© This drawing is confidential and may not be used, copied or disclosed to anyone without permission of Warmup Plc. The Copyright of these drawings remain the property of Warmup Plc.

Do not scale from drawings, all dimensions to be checked on site.

The Warmup word and associated logos are trade marks. © Warmup Plc. 2010 - Regd. TM Nos. 1257757, 4409926, 5265707. E & OE. Registered in England No. 2955213.



- 14\_ Vinyl floor finish
- 13\_ UFH compatible underlay
- 12\_ 2-3 mm smoothing compound
- 11\_ Warmup Dual Overlay Concrete or 18 mm T&G P5 Chipboard floor
- 10\_ 1mm Polyethylene foam or equivalent
- 09\_ Floor sensor (conduit recommended)\*
- 08\_ Warmup Contura Diffusion Plate
- 07\_ Warmup 16 mm pipework
- 06\_ Warmup Contura Panel
- 05\_ Warmup perimeter expansion strip
- 04\_ DPM
- 03\_ Plywood supporting layer
- 02\_ Supporting battens
- 01\_ Joisted floor

REV	DATE	DESCRIPTION	DR	CH



# Warmup

The world's **best-selling** floor heating brand™

WARMUP PLC, 704 Tudor Estate, Abbey Road, London, NW10 7UW  
 Tel 0845 034 8270 Fax 0208 453 6869  
[cad@warmup.com](mailto:cad@warmup.com) [projects@warmup.com](mailto:projects@warmup.com) [www.warmup.co.uk](http://www.warmup.co.uk)

<b>DRAWING ISSUE STATUS</b>		<b>DRAWING NO</b>
<b>CONSTRUCTION</b>		15
<b>PROJECT</b>		
<b>CONTURA FLOATING FLOOR SYSTEM</b>		
TIMBER SUBFLOOR		
<b>TITLE</b>		
VINYL FLOOR - GLUED		
<b>DETAILED SECTION</b>		
<b>PROJECT MANAGER</b>	<b>DRAWN</b>	<b>CHECKED</b>
	AA	AW
<b>DATE</b>	<b>SCALE</b>	<b>REVISION</b>
21.02.2017	1:50@A3	
<b>CAD FILE</b>		
20170221-H-CONTURA-DET SECTIONS.DWG		

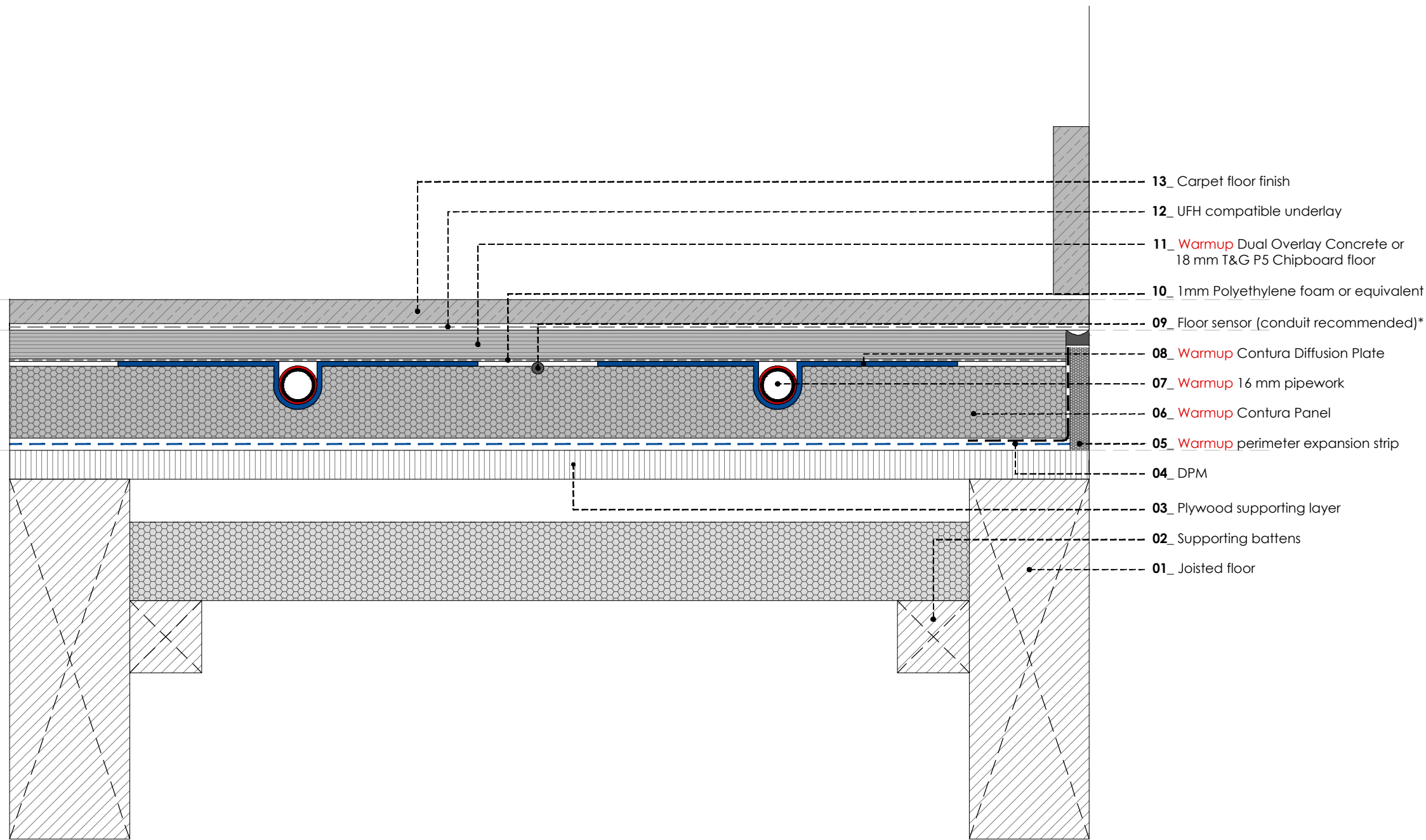
## WARMUP CONTURA FLOATING FLOOR SYSTEM. Timber subfloor. Vinyl floor - glued

\* The aluminium plates should be trimmed to allow 50mm spacing between the sensor and the diffuser plates.

© This drawing is confidential and may not be used, copied or disclosed to anyone without permission of Warmup Plc. The Copyright of these drawings remain the property of Warmup Plc.

Do not scale from drawings, all dimensions to be checked on site.

The Warmup word and associated logos are trade marks. © Warmup Plc. 2010 - Regd. TM Nos. 1257757, 4409926, 5265707. E & OE. Registered in England No. 2955213.



- 13\_ Carpet floor finish
- 12\_ UFH compatible underlay
- 11\_ Warmup Dual Overlay Concrete or 18 mm T&G P5 Chipboard floor
- 10\_ 1mm Polyethylene foam or equivalent
- 09\_ Floor sensor (conduit recommended)\*
- 08\_ Warmup Contura Diffusion Plate
- 07\_ Warmup 16 mm pipework
- 06\_ Warmup Contura Panel
- 05\_ Warmup perimeter expansion strip
- 04\_ DPM
- 03\_ Plywood supporting layer
- 02\_ Supporting battens
- 01\_ Joisted floor

REV	DATE	DESCRIPTION	DR	CH



# Warmup

The world's **best-selling** floor heating brand™

WARMUP PLC, 704 Tudor Estate, Abbey Road, London, NW10 7UW  
Tel 0845 034 8270 Fax 0208 453 6869  
cad@warmup.com projects@warmup.com www.warmup.co.uk

<b>DRAWING ISSUE STATUS</b>		<b>DRAWING NO</b>
<b>CONSTRUCTION</b>		16
<b>PROJECT</b>		
<b>CONTURA FLOATING FLOOR SYSTEM</b>		
TIMBER SUBFLOOR		
<b>TITLE</b>		
CARPET FLOOR		
<b>DETAILED SECTION</b>		
<b>PROJECT MANAGER</b>	<b>DRAWN</b>	<b>CHECKED</b>
	AA	AW
<b>DATE</b>	<b>SCALE</b>	<b>REVISION</b>
21.02.2017	1:50@A3	
<b>CAD FILE</b>		
20170221-H-CONTURA-DET SECTIONS.DWG		

## WARMUP CONTURA FLOATING FLOOR SYSTEM. Timber subfloor. Carpet floor

\* The aluminium plates should be trimmed to allow 50mm spacing between the sensor and the diffuser plates.

© This drawing is confidential and may not be used, copied or disclosed to anyone without permission of Warmup Plc. The Copyright of these drawings remain the property of Warmup Plc.

Do not scale from drawings, all dimensions to be checked on site.

The Warmup word and associated logos are trade marks. © Warmup Plc. 2010 - Regd. TM Nos. 1257757, 4409926, 5265707. E & OE. Registered in England No. 2955213.