

- 11_ Floor finish and intermediate layer
- 10_ Timber floor deck
- 09_ 25 mm polymer modified screed
- 08_ Floor sensor (conduit recommended)
- 07_ Warmup 40/60 mm Clypso Clip
- 06_ Warmup 16 mm pipework
- 05_ Moisture control layer
- 04_ Rigid insulation
- 03_ Plywood supporting layer
[min 12 mm]
- 02_ 25 mm battens
- 01_ Timber Joists
[max 600 mm centres]

WARMUP SILVA SYSTEM. Timber subfloor. Generic template

| REV | DATE | DESCRIPTION | DR | CH |
|-----|------|-------------|----|----|
| | | | | |



Warmup

The world's **best-selling** floor heating brand™

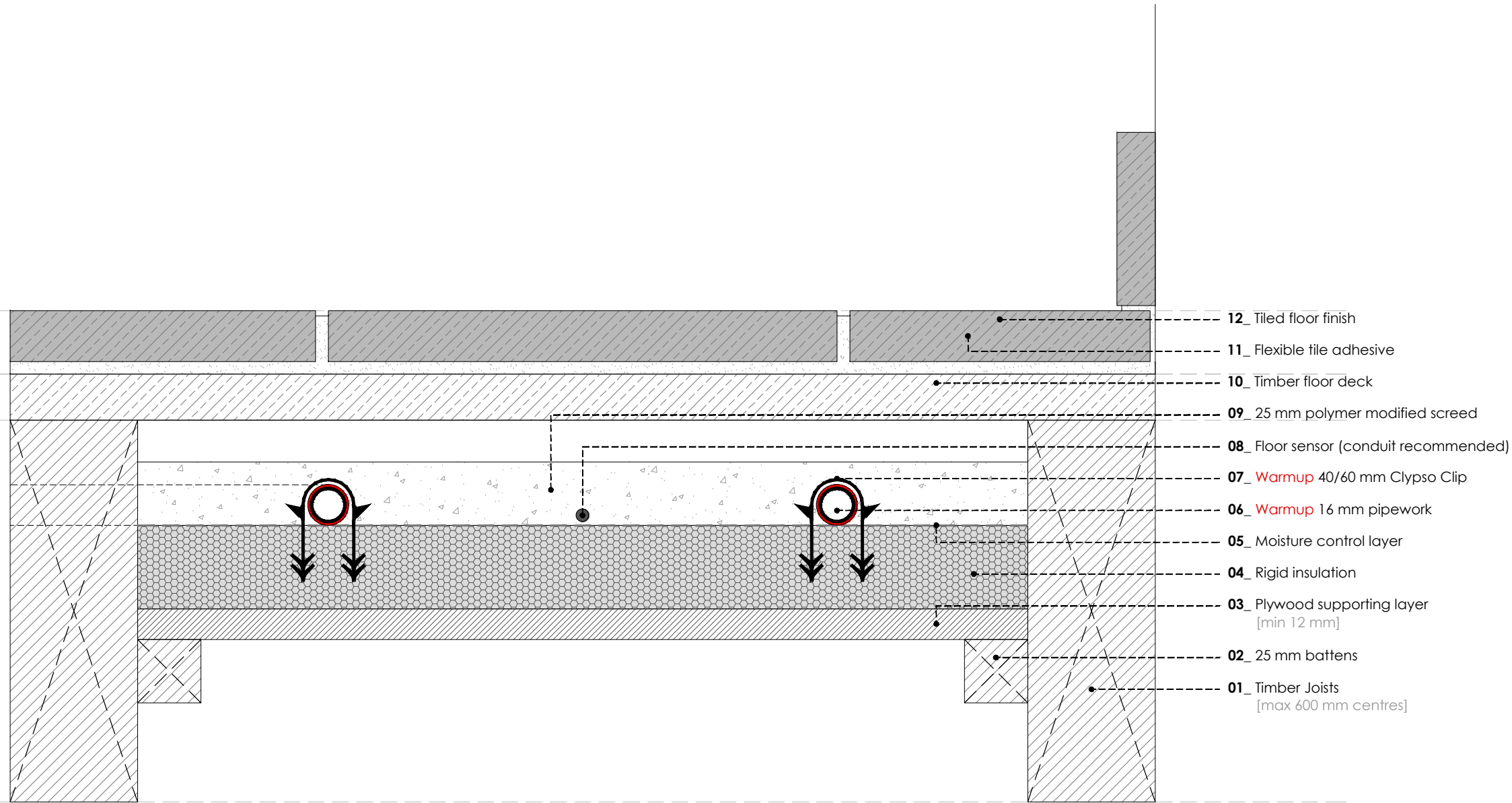
WARMUP PLC, 704 Tudor Estate, Abbey Road, London, NW10 7UW
Tel 0845 034 8270 Fax 0208 453 6869
cad@warmup.com projects@warmup.com www.warmup.co.uk

| | | |
|-----------------------------------|--------------|-------------------|
| DRAWING ISSUE STATUS | | DRAWING NO |
| CONSTRUCTION | | 01 |
| PROJECT | | |
| SILVA JOISTED FLOOR SYSTEM | | |
| TIMBER SUBFLOOR | | |
| TITLE | | |
| GENERIC TEMPLATE | | |
| DETAILED SECTION | | |
| PROJECT MANAGER | DRAWN | CHECKED |
| | AA | AW |
| DATE | SCALE | REVISION |
| 24.02.2017 | 1:50@A3 | |
| CAD FILE | | |
| 20170224-H-SILVA-DET SECTIONS.DWG | | |

© This drawing is confidential and may not be used, copied or disclosed to anyone without permission of Warmup Plc. The Copyright of these drawings remain the property of Warmup Plc.

Do not scale from drawings, all dimensions to be checked on site.

The Warmup word and associated logos are trade marks. © Warmup Plc. 2010 - Regd. TM Nos. 1257757, 4409926, 5265707. E & OE. Registered in England No. 2955213.



WARMUP SILVA SYSTEM. Timber subfloor. Tiled floor

| REV | DATE | DESCRIPTION | DR | CH |
|-----|------|-------------|----|----|
| | | | | |



Warmup

The world's **best-selling** floor heating brand™

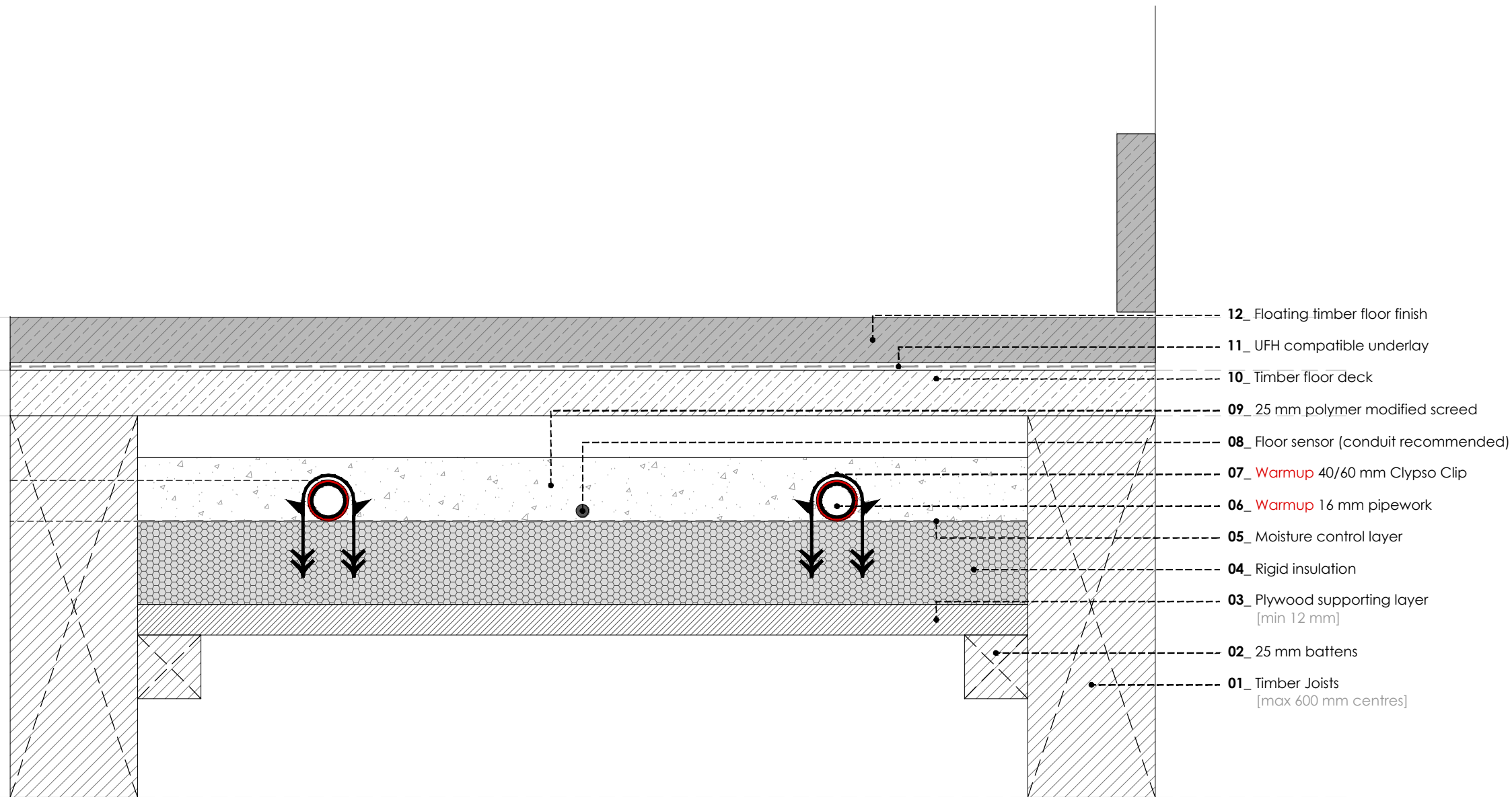
WARMUP PLC, 704 Tudor Estate, Abbey Road, London, NW10 7UW
 Tel 0845 034 8270 Fax 0208 453 6869
cad@warmup.com projects@warmup.com www.warmup.co.uk

| | | |
|-----------------------------------|--------------|-------------------|
| DRAWING ISSUE STATUS | | DRAWING NO |
| CONSTRUCTION | | 02 |
| PROJECT | | |
| SILVA JOISTED FLOOR SYSTEM | | |
| TIMBER SUBFLOOR | | |
| TITLE | | |
| TILED FLOOR | | |
| DETAILED SECTION | | |
| PROJECT MANAGER | DRAWN | CHECKED |
| | AA | AW |
| DATE | SCALE | REVISION |
| 24.02.2017 | 1:50@A3 | |
| CAD FILE | | |
| 20170224-H-SILVA-DET SECTIONS.DWG | | |

© This drawing is confidential and may not be used, copied or disclosed to anyone without permission of Warmup Plc. The Copyright of these drawings remain the property of Warmup Plc.

Do not scale from drawings, all dimensions to be checked on site.

The Warmup word and associated logos are trade marks. © Warmup Plc. 2010 - Regd. TM Nos. 1257757, 4409926, 5265707. E & OE. Registered in England No. 2955213.



WARMUP SILVA SYSTEM. Timber subfloor. Wood / Laminate Floor - Floating

| REV | DATE | DESCRIPTION | DR | CH |
|-----|------|-------------|----|----|
| | | | | |



Warmup

The world's **best-selling** floor heating brand™

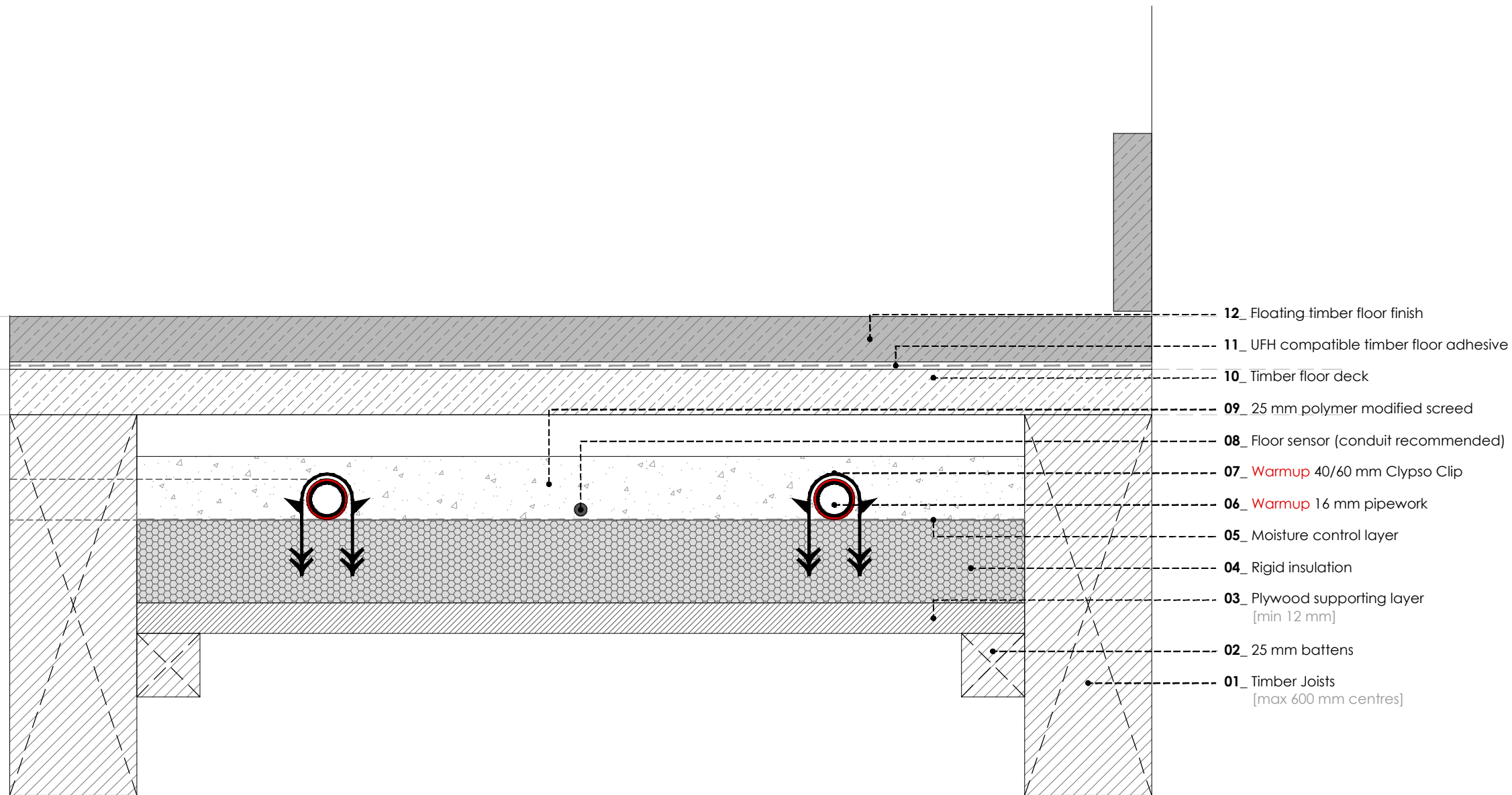
WARMUP PLC, 704 Tudor Estate, Abbey Road, London, NW10 7UW
 Tel 0845 034 8270 Fax 0208 453 6869
cad@warmup.com projects@warmup.com www.warmup.co.uk

| | | |
|-----------------------------------|--------------|-------------------|
| DRAWING ISSUE STATUS | | DRAWING NO |
| CONSTRUCTION | | 03 |
| PROJECT | | |
| SILVA JOISTED FLOOR SYSTEM | | |
| TIMBER SUBFLOOR | | |
| TITLE | | |
| WOOD / LAMINATE FLOOR - FLOATING | | |
| DETAILED SECTION | | |
| PROJECT MANAGER | DRAWN | CHECKED |
| | AA | AW |
| DATE | SCALE | REVISION |
| 24.02.2017 | 1:50@A3 | |
| CAD FILE | | |
| 20170224-H-SILVA-DET SECTIONS.DWG | | |

© This drawing is confidential and may not be used, copied or disclosed to anyone without permission of Warmup Plc. The Copyright of these drawings remain the property of Warmup Plc.

Do not scale from drawings, all dimensions to be checked on site.

The Warmup word and associated logos are trade marks. © Warmup Plc. 2010 - Regd. TM Nos. 1257757, 4409926, 5265707. E & OE. Registered in England No. 2955213.



- 12_ Floating timber floor finish
- 11_ UFH compatible timber floor adhesive
- 10_ Timber floor deck
- 09_ 25 mm polymer modified screed
- 08_ Floor sensor (conduit recommended)
- 07_ Warmup 40/60 mm Clypso Clip
- 06_ Warmup 16 mm pipework
- 05_ Moisture control layer
- 04_ Rigid insulation
- 03_ Plywood supporting layer [min 12 mm]
- 02_ 25 mm battens
- 01_ Timber Joists [max 600 mm centres]

WARMUP SILVA SYSTEM. Timber subfloor. Wood / Laminate - Glued

| REV | DATE | DESCRIPTION | DR | CH |
|-----|------|-------------|----|----|
| | | | | |



Warmup

The world's **best-selling** floor heating brand™

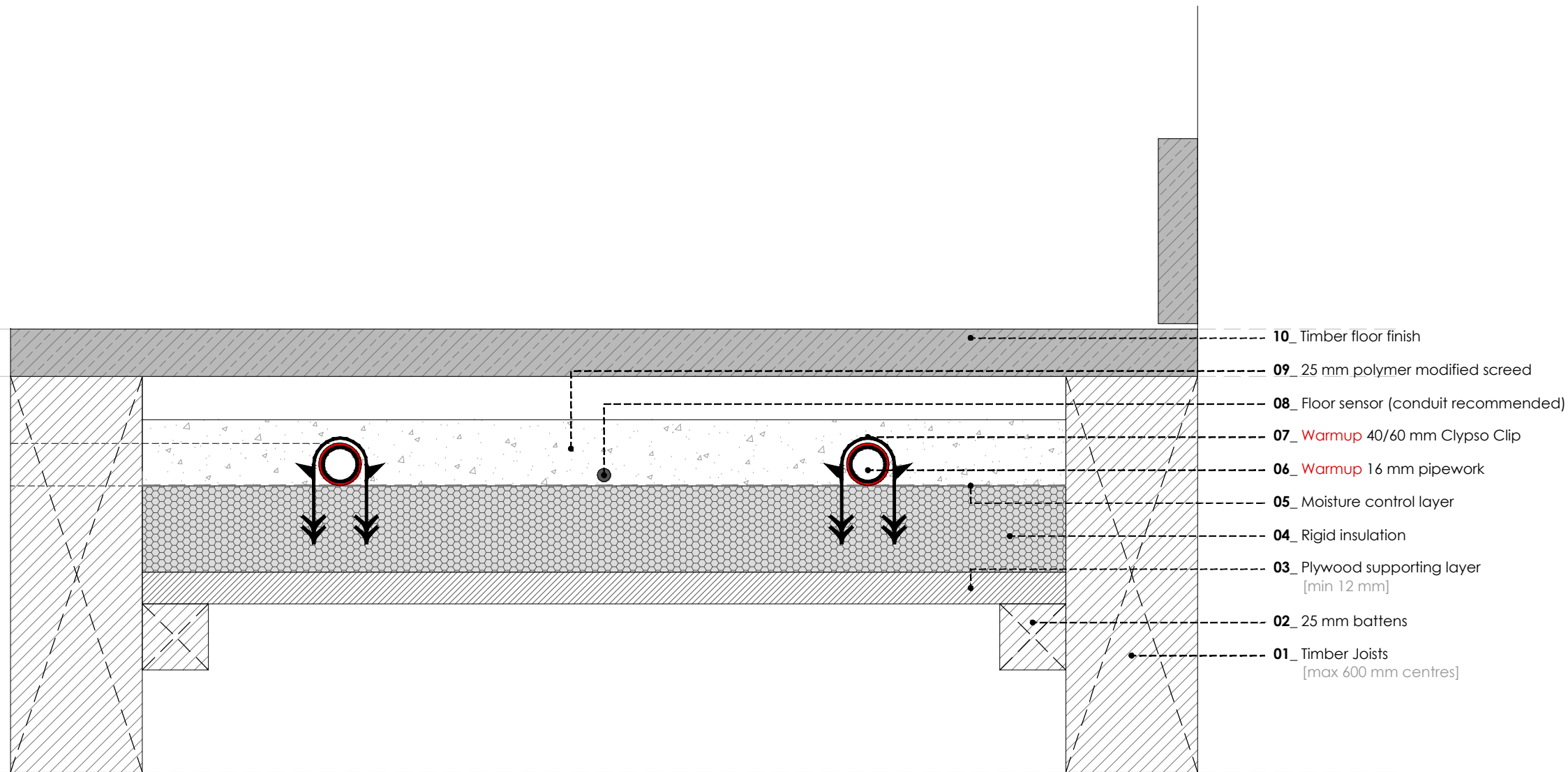
WARMUP PLC, 704 Tudor Estate, Abbey Road, London, NW10 7UW
Tel 0845 034 8270 Fax 0208 453 6869
cad@warmup.com projects@warmup.com www.warmup.co.uk

| | | |
|-----------------------------------|--------------|-------------------|
| DRAWING ISSUE STATUS | | DRAWING NO |
| CONSTRUCTION | | 04 |
| PROJECT | | |
| SILVA JOISTED FLOOR SYSTEM | | |
| TIMBER SUBFLOOR | | |
| TITLE | | |
| WOOD / LAMINATE FLOOR - GLUED | | |
| DETAILED SECTION | | |
| PROJECT MANAGER | DRAWN | CHECKED |
| | AA | AW |
| DATE | SCALE | REVISION |
| 24.02.2017 | 1:50@A3 | |
| CAD FILE | | |
| 20170224-H-SILVA-DET SECTIONS.DWG | | |

© This drawing is confidential and may not be used, copied or disclosed to anyone without permission of Warmup Plc. The Copyright of these drawings remain the property of Warmup Plc.

Do not scale from drawings, all dimensions to be checked on site.

The Warmup word and associated logos are trade marks. © Warmup Plc. 2010 - Regd. TM Nos. 1257757, 4409926, 5265707. E & OE. Registered in England No. 2955213.



- 10_ Timber floor finish
- 09_ 25 mm polymer modified screed
- 08_ Floor sensor (conduit recommended)
- 07_ Warmup 40/60 mm Clypso Clip
- 06_ Warmup 16 mm pipework
- 05_ Moisture control layer
- 04_ Rigid insulation
- 03_ Plywood supporting layer [min 12 mm]
- 02_ 25 mm battens
- 01_ Timber Joists [max 600 mm centres]

WARMUP SILVA SYSTEM. Timber subfloor. Wood / Laminate Floor - screwed / nailed

| REV | DATE | DESCRIPTION | DR | CH |
|-----|------|-------------|----|----|
| | | | | |



Warmup

The world's **best-selling** floor heating brand™

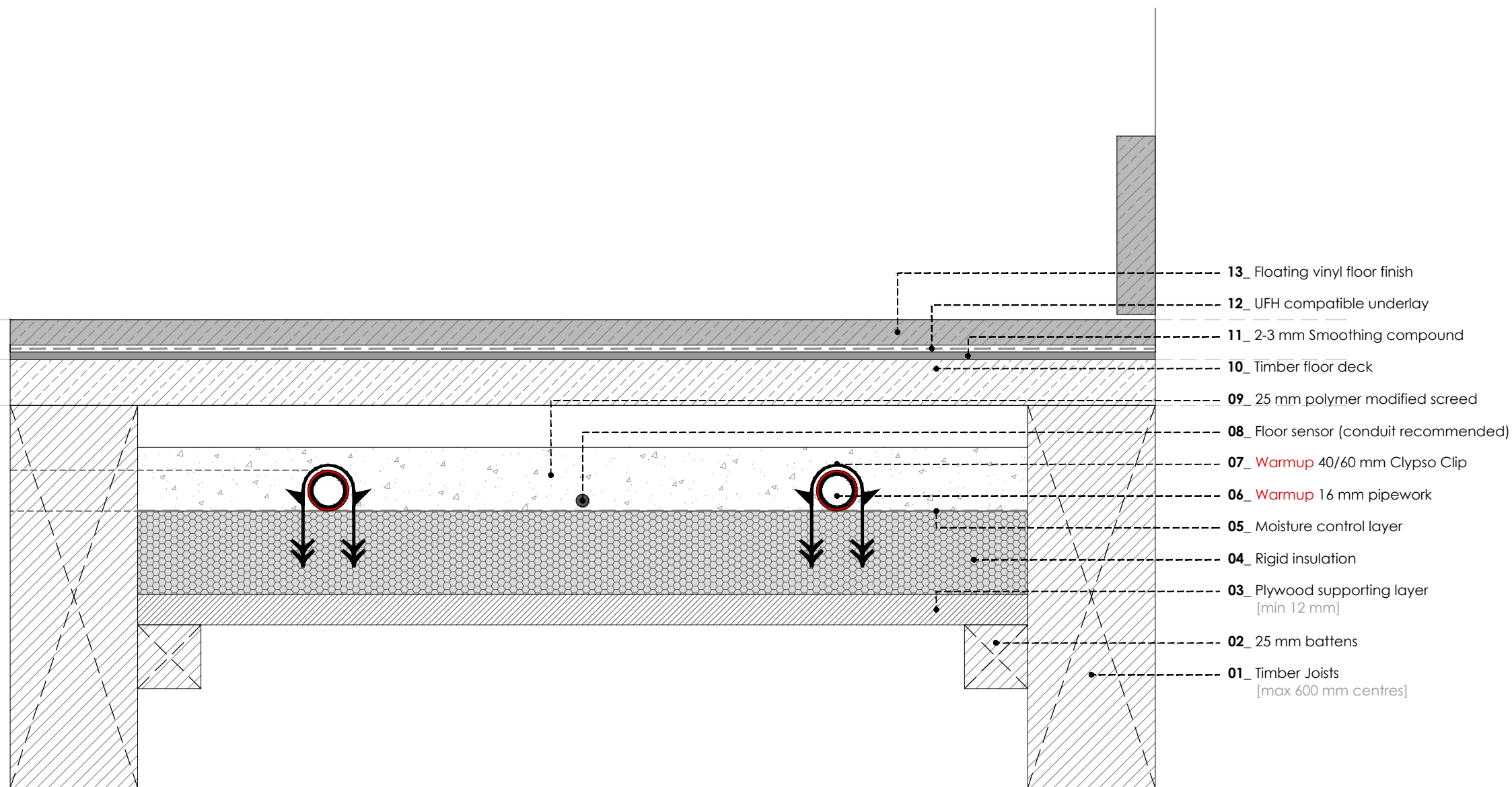
WARMUP PLC, 704 Tudor Estate, Abbey Road, London, NW10 7UW
 Tel 0845 034 8270 Fax 0208 453 6869
cad@warmup.com projects@warmup.com www.warmup.co.uk

| | | |
|------------------------------------|--------------|-------------------|
| DRAWING ISSUE STATUS | | DRAWING NO |
| CONSTRUCTION | | 05 |
| PROJECT | | |
| SILVA JOISTED FLOOR SYSTEM | | |
| TIMBER SUBFLOOR | | |
| TITLE | | |
| WOOD/LAMINATE FLOOR-SCREWED/NAILED | | |
| DETAILED SECTION | | |
| PROJECT MANAGER | DRAWN | CHECKED |
| | AA | AW |
| DATE | SCALE | REVISION |
| 24.02.2017 | 1:50@A3 | |
| CAD FILE | | |
| 20170224-H-SILVA-DET SECTIONS.DWG | | |

© This drawing is confidential and may not be used, copied or disclosed to anyone without permission of Warmup Plc. The Copyright of these drawings remain the property of Warmup Plc.

Do not scale from drawings, all dimensions to be checked on site.

The Warmup word and associated logos are trade marks. © Warmup Plc. 2010 - Regd. TM Nos. 1257757, 4409926, 5265707. E & OE. Registered in England No. 2955213.



WARMUP SILVA SYSTEM. Timber subfloor. Vinyl Floor - Floating

| REV | DATE | DESCRIPTION | DR | CH |
|-----|------|-------------|----|----|
| | | | | |



Warmup

The world's **best-selling** floor heating brand™

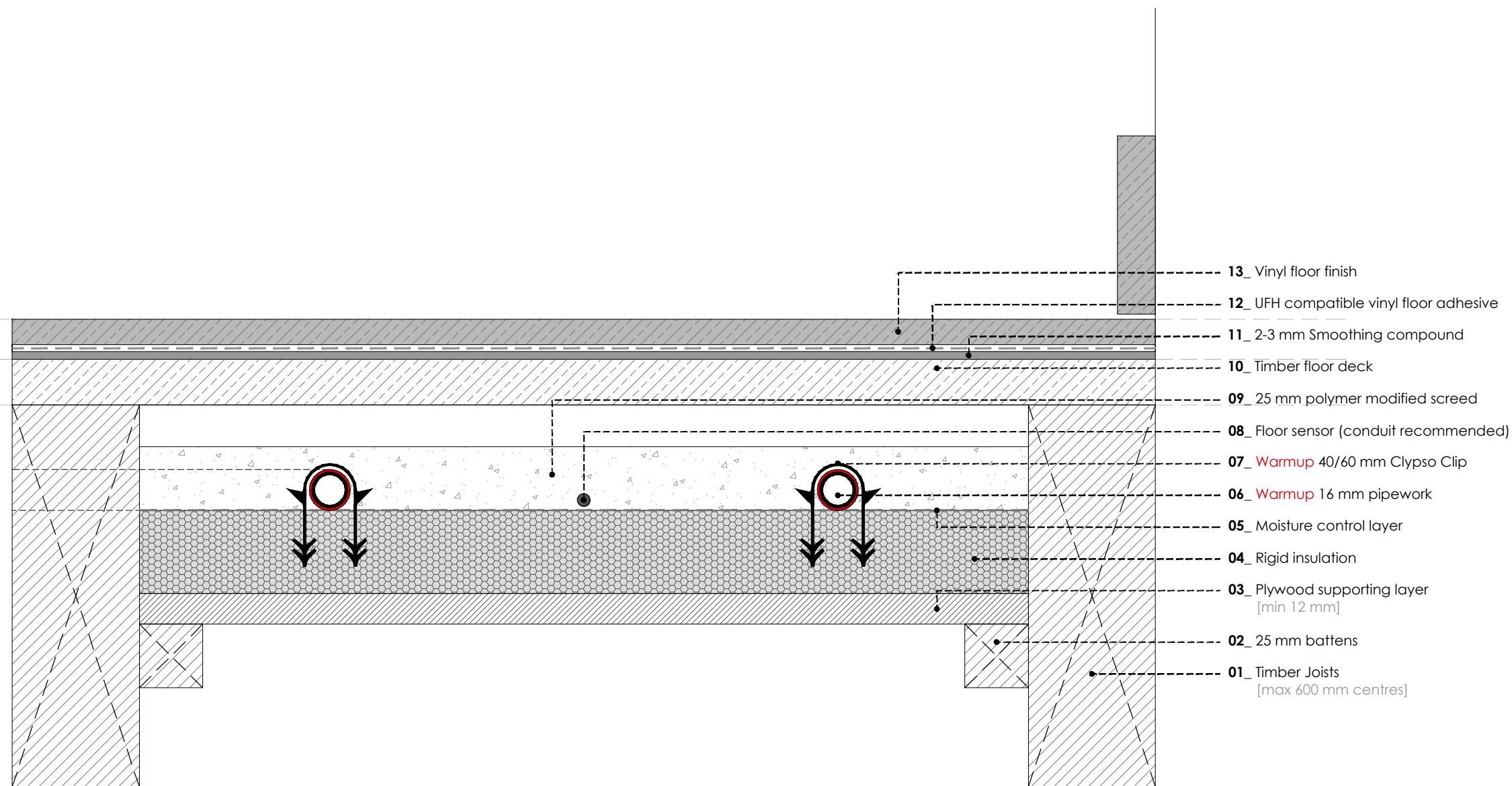
WARMUP PLC, 704 Tudor Estate, Abbey Road, London, NW10 7UW
 Tel 0845 034 8270 Fax 0208 453 6869
cad@warmup.com projects@warmup.com www.warmup.co.uk

| | | |
|-----------------------------------|--------------|-------------------|
| DRAWING ISSUE STATUS | | DRAWING NO |
| CONSTRUCTION | | 06 |
| PROJECT | | |
| SILVA JOISTED FLOOR SYSTEM | | |
| TIMBER SUBFLOOR | | |
| TITLE | | |
| VINYL FLOOR - FLOATING | | |
| DETAILED SECTION | | |
| PROJECT MANAGER | DRAWN | CHECKED |
| | AA | AW |
| DATE | SCALE | REVISION |
| 24.02.2017 | 1:50@A3 | |
| CAD FILE | | |
| 20170224-H-SILVA-DET SECTIONS.DWG | | |

© This drawing is confidential and may not be used, copied or disclosed to anyone without permission of Warmup Plc. The Copyright of these drawings remain the property of Warmup Plc.

Do not scale from drawings, all dimensions to be checked on site.

The Warmup word and associated logos are trade marks. © Warmup Plc. 2010 - Regd. TM Nos. 1257757, 4409926, 5265707. E & OE. Registered in England No. 2955213.



- 13_ Vinyl floor finish
- 12_ UFH compatible vinyl floor adhesive
- 11_ 2-3 mm Smoothing compound
- 10_ Timber floor deck
- 09_ 25 mm polymer modified screed
- 08_ Floor sensor (conduit recommended)
- 07_ Warmup 40/60 mm Clipso Clip
- 06_ Warmup 16 mm pipework
- 05_ Moisture control layer
- 04_ Rigid insulation
- 03_ Plywood supporting layer
[min 12 mm]
- 02_ 25 mm battens
- 01_ Timber Joists
[max 600 mm centres]

WARMUP SILVA SYSTEM. Timber subfloor. Vinyl Floor - Glued

| REV | DATE | DESCRIPTION | DR | CH |
|-----|------|-------------|----|----|
| | | | | |

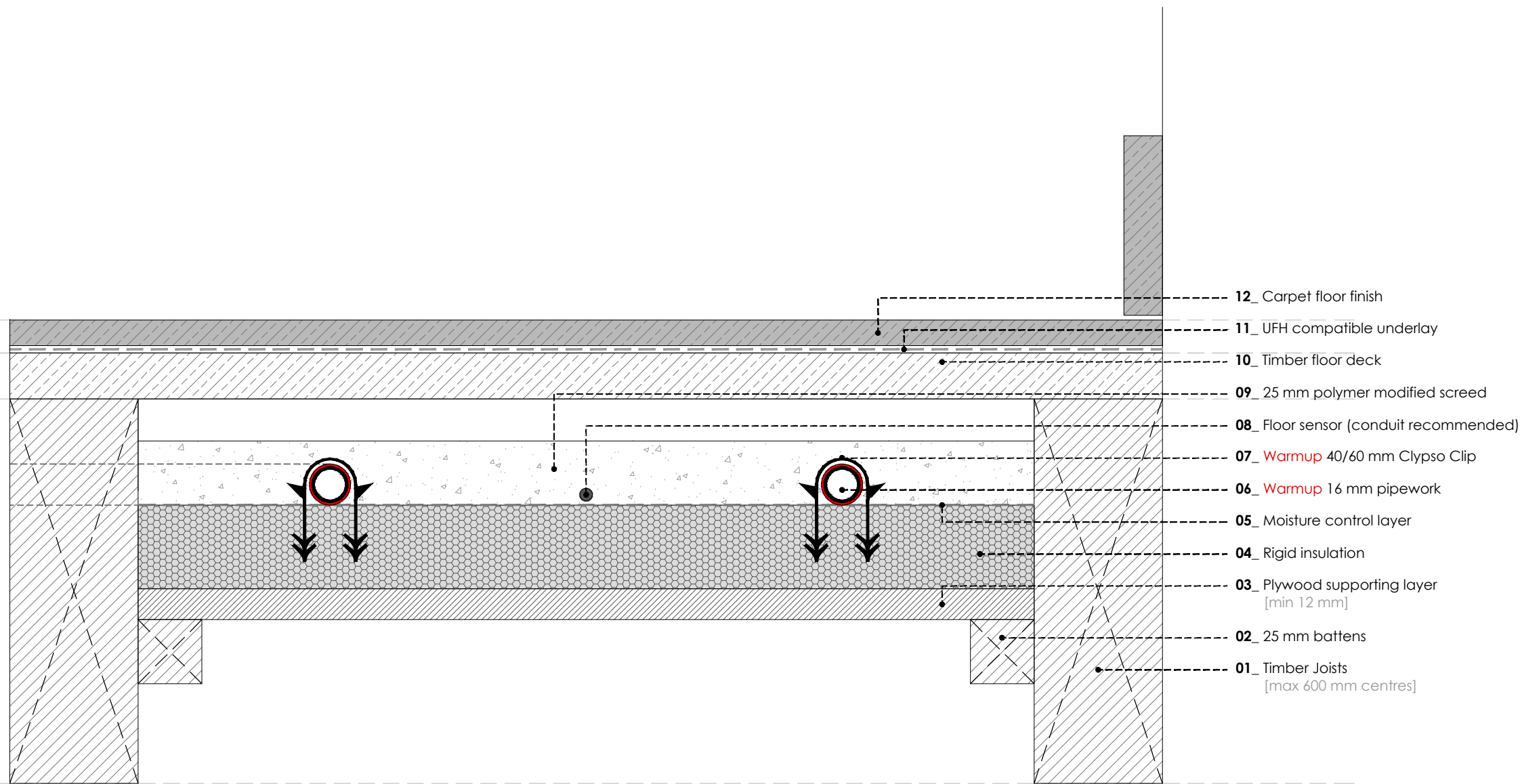


Warmup

The world's **best-selling** floor heating brand™
 WARMUP PLC, 704 Tudor Estate, Abbey Road, London, NW10 7UW
 Tel 0845 034 8270 Fax 0208 453 6869
cad@warmup.com projects@warmup.com www.warmup.co.uk

| | | |
|-----------------------------------|--------------|-------------------|
| DRAWING ISSUE STATUS | | DRAWING NO |
| CONSTRUCTION | | 07 |
| PROJECT | | |
| SILVA JOISTED FLOOR SYSTEM | | |
| TIMBER SUBFLOOR | | |
| TITLE | | |
| VINYL FLOOR - GLUED | | |
| DETAILED SECTION | | |
| PROJECT MANAGER | DRAWN | CHECKED |
| | AA | AW |
| DATE | SCALE | REVISION |
| 24.02.2017 | 1:50@A3 | |
| CAD FILE | | |
| 20170224-H-SILVA-DET SECTIONS.DWG | | |

© This drawing is confidential and may not be used, copied or disclosed to anyone without permission of Warmup Plc. The Copyright of these drawings remain the property of Warmup Plc.
 Do not scale from drawings, all dimensions to be checked on site.
 The Warmup word and associated logos are trade marks. © Warmup Plc. 2010 - Regd. TM Nos. 1257757, 4409926, 5265707. E & OE. Registered in England No. 2955213.



| REV | DATE | DESCRIPTION | DR | CH |
|-----|------|-------------|----|----|
| | | | | |



Warmup

The world's **best-selling** floor heating brand™

WARMUP PLC, 704 Tudor Estate, Abbey Road, London, NW10 7UW
 Tel 0845 034 8270 Fax 0208 453 6869
cad@warmup.com projects@warmup.com www.warmup.co.uk

| | | |
|-----------------------------------|--------------|-------------------|
| DRAWING ISSUE STATUS | | DRAWING NO |
| CONSTRUCTION | | 08 |
| PROJECT | | |
| SILVA JOISTED FLOOR SYSTEM | | |
| TIMBER SUBFLOOR | | |
| TITLE | | |
| CARPET FLOOR | | |
| DETAILED SECTION | | |
| PROJECT MANAGER | DRAWN | CHECKED |
| | AA | AW |
| DATE | SCALE | REVISION |
| 24.02.2017 | 1:50@A3 | |
| CAD FILE | | |
| 20170224-H-SILVA-DET SECTIONS.DWG | | |

WARMUP SILVA SYSTEM. Timber subfloor. Carpet floor

© This drawing is confidential and may not be used, copied or disclosed to anyone without permission of Warmup Plc. The Copyright of these drawings remain the property of Warmup Plc.

Do not scale from drawings, all dimensions to be checked on site.

The Warmup word and associated logos are trade marks. © Warmup Plc. 2010 - Regd. TM Nos. 1257757, 4409926, 5265707. E & OE. Registered in England No. 2955213.