

REV	DATE	DESCRIPTION	DR	CH



# Warmup

The world's **best-selling** floor heating brand™

WARMUP PLC, 704 Tudor Estate, Abbey Road, London, NW10 7UW  
 Tel 0845 034 8270 Fax 0208 453 6869  
[cad@warmup.com](mailto:cad@warmup.com) [projects@warmup.com](mailto:projects@warmup.com) [www.warmup.co.uk](http://www.warmup.co.uk)

<b>DRAWING ISSUE STATUS</b>		<b>DRAWING NO</b>
<b>CONSTRUCTION</b>		10
<b>PROJECT</b>		
<b>TOTAL-16 LOW PROFILE SYSTEM</b>		
TIMBER SUBFLOOR		
<b>TITLE</b>		
GENERIC TEMPLATE		
<b>DETAILED SECTION</b>		
<b>PROJECT MANAGER</b>	<b>DRAWN</b>	<b>CHECKED</b>
	AA	AW
<b>DATE</b>	<b>SCALE</b>	<b>REVISION</b>
24.02.2017	1:50@A3	
<b>CAD FILE</b>		
20170224-H-T16-DET SECTIONS.DWG		

## WARMUP TOTAL16. Timber subfloor. Generic template

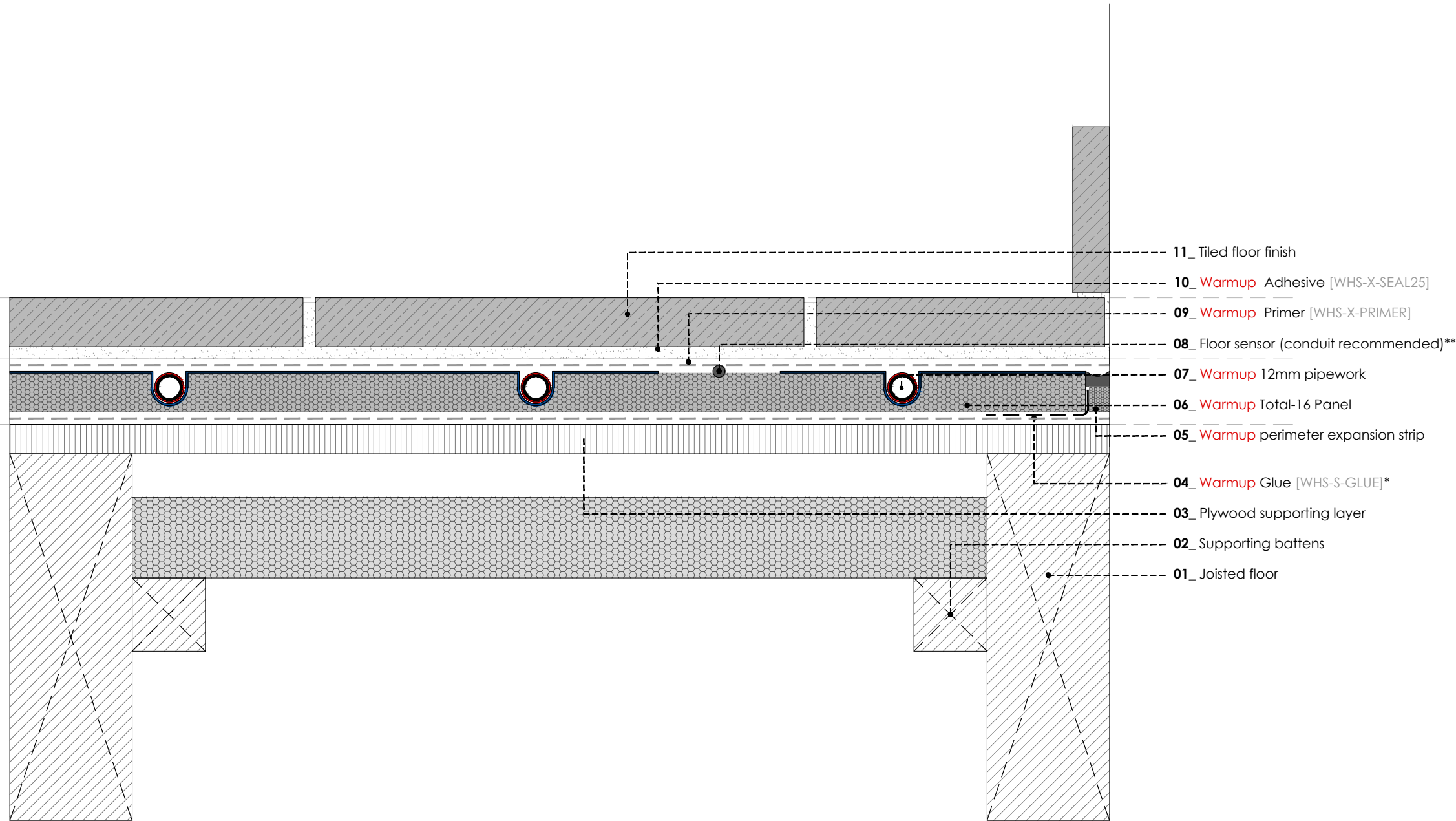
\* If rising damp is an issue use Warmup Adhesive (WHS-X-SEAL25) mixed with binder (WHS-X-BINDER) to adhere the boards to the subfloor. Do not use Warmup Glue (WHS-X-GLUE).

\*\* The aluminium plates should be trimmed to allow 50mm spacing between the sensor and the diffuser plates.

© This drawing is confidential and may not be used, copied or disclosed to anyone without permission of Warmup Plc. The Copyright of these drawings remain the property of Warmup Plc.

Do not scale from drawings, all dimensions to be checked on site.

The Warmup word and associated logos are trade marks. © Warmup Plc. 2010 - Regd. TM Nos. 1257757, 4409926, 5265707. E & OE. Registered in England No. 2955213.



REV	DATE	DESCRIPTION	DR	CH



# Warmup

The world's **best-selling** floor heating brand™

WARMUP PLC, 704 Tudor Estate, Abbey Road, London, NW10 7UW  
 Tel 0845 034 8270 Fax 0208 453 6869  
[cad@warmup.com](mailto:cad@warmup.com) [projects@warmup.com](mailto:projects@warmup.com) [www.warmup.co.uk](http://www.warmup.co.uk)

<b>DRAWING ISSUE STATUS</b>		<b>DRAWING NO</b>
<b>CONSTRUCTION</b>		11
<b>PROJECT</b>		
<b>TOTAL-16 LOW PROFILE SYSTEM</b>		
TIMBER SUBFLOOR		
<b>TITLE</b>		
TILED FLOOR-DOMESTIC INSTALLATION		
<b>DETAILED SECTION</b>		
<b>PROJECT MANAGER</b>	<b>DRAWN</b>	<b>CHECKED</b>
	AA	AW
<b>DATE</b>	<b>SCALE</b>	<b>REVISION</b>
24.02.2017	1:50@A3	
<b>CAD FILE</b>		
20170224-H-T16-DET SECTIONS.DWG		

## WARMUP TOTAL16. Timber subfloor. Tiled floor - Domestic Installation

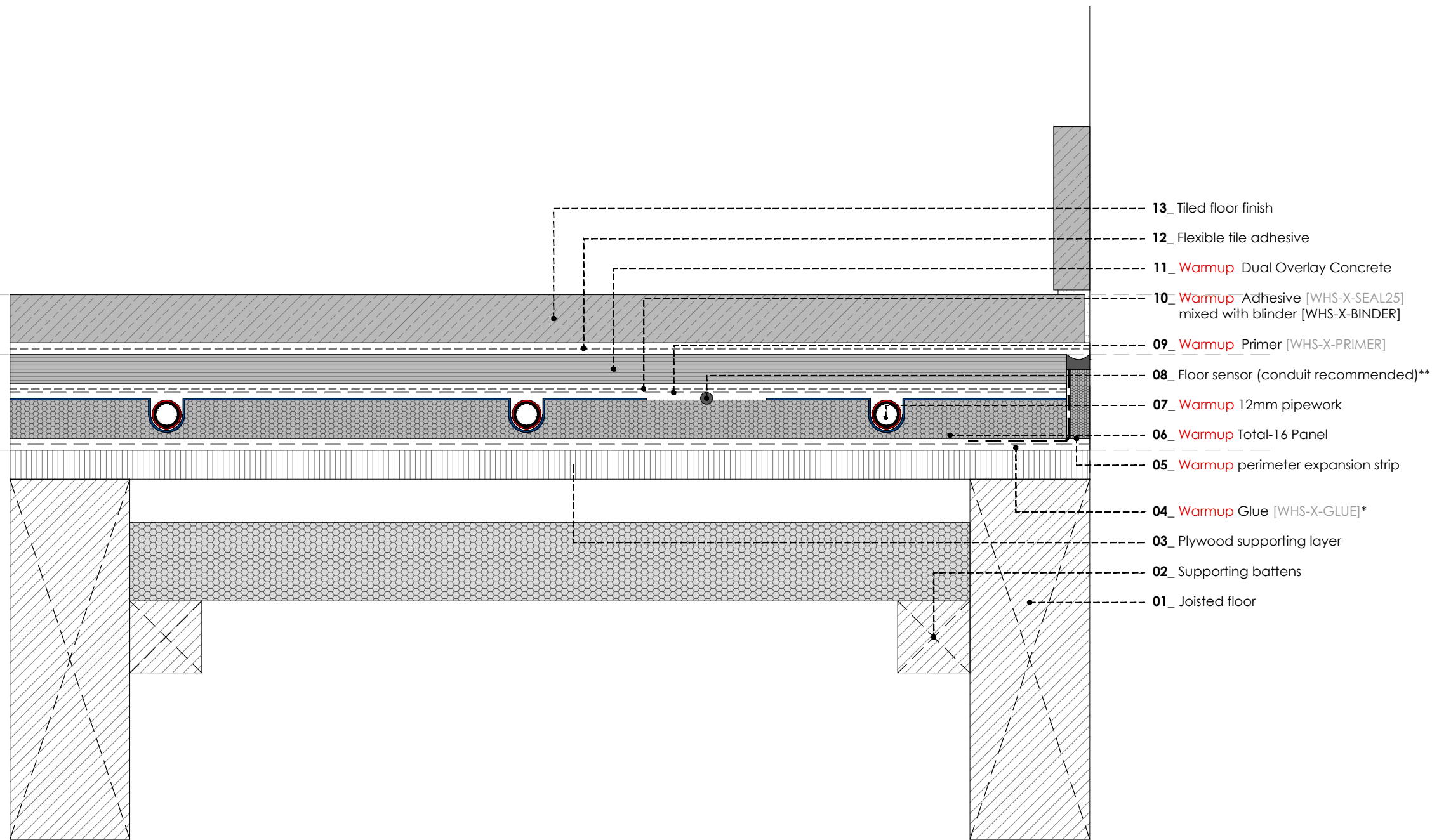
\* If rising damp is an issue use Warmup Adhesive (WHS-X-SEAL25) mixed with binder (WHS-X-BINDER) to adhere the boards to the subfloor. Do not use Warmup Glue (WHS-X-GLUE).

\*\* The aluminium plates should be trimmed to allow 50mm spacing between the sensor and the diffuser plates.

© This drawing is confidential and may not be used, copied or disclosed to anyone without permission of Warmup Plc. The Copyright of these drawings remain the property of Warmup Plc.

Do not scale from drawings, all dimensions to be checked on site.

The Warmup word and associated logos are trade marks. © Warmup Plc. 2010 - Regd. TM Nos. 1257757, 4409926, 5265707. E & OE. Registered in England No. 2955213.



REV	DATE	DESCRIPTION	DR	CH



# Warmup

The world's **best-selling** floor heating brand™

WARMUP PLC, 704 Tudor Estate, Abbey Road, London, NW10 7UW  
 Tel 0845 034 8270 Fax 0208 453 6869  
[cad@warmup.com](mailto:cad@warmup.com) [projects@warmup.com](mailto:projects@warmup.com) [www.warmup.co.uk](http://www.warmup.co.uk)

<b>DRAWING ISSUE STATUS</b>		<b>DRAWING NO</b>
<b>CONSTRUCTION</b>		12
<b>PROJECT</b>		
<b>TOTAL-16 LOW PROFILE SYSTEM</b>		
TIMBER SUBFLOOR		
<b>TITLE</b>		
TILED FLOOR. LIGHT COMMERCIAL INST.		
<b>DETAILED SECTION</b>		
<b>PROJECT MANAGER</b>	<b>DRAWN</b>	<b>CHECKED</b>
	AA	AW
<b>DATE</b>	<b>SCALE</b>	<b>REVISION</b>
24.02.2017	1:50@A3	
<b>CAD FILE</b>		
20170224-H-T16-DET SECTIONS.DWG		

## WARMUP TOTAL16. Timber subfloor. Tiled floor - Light Commercial Installation

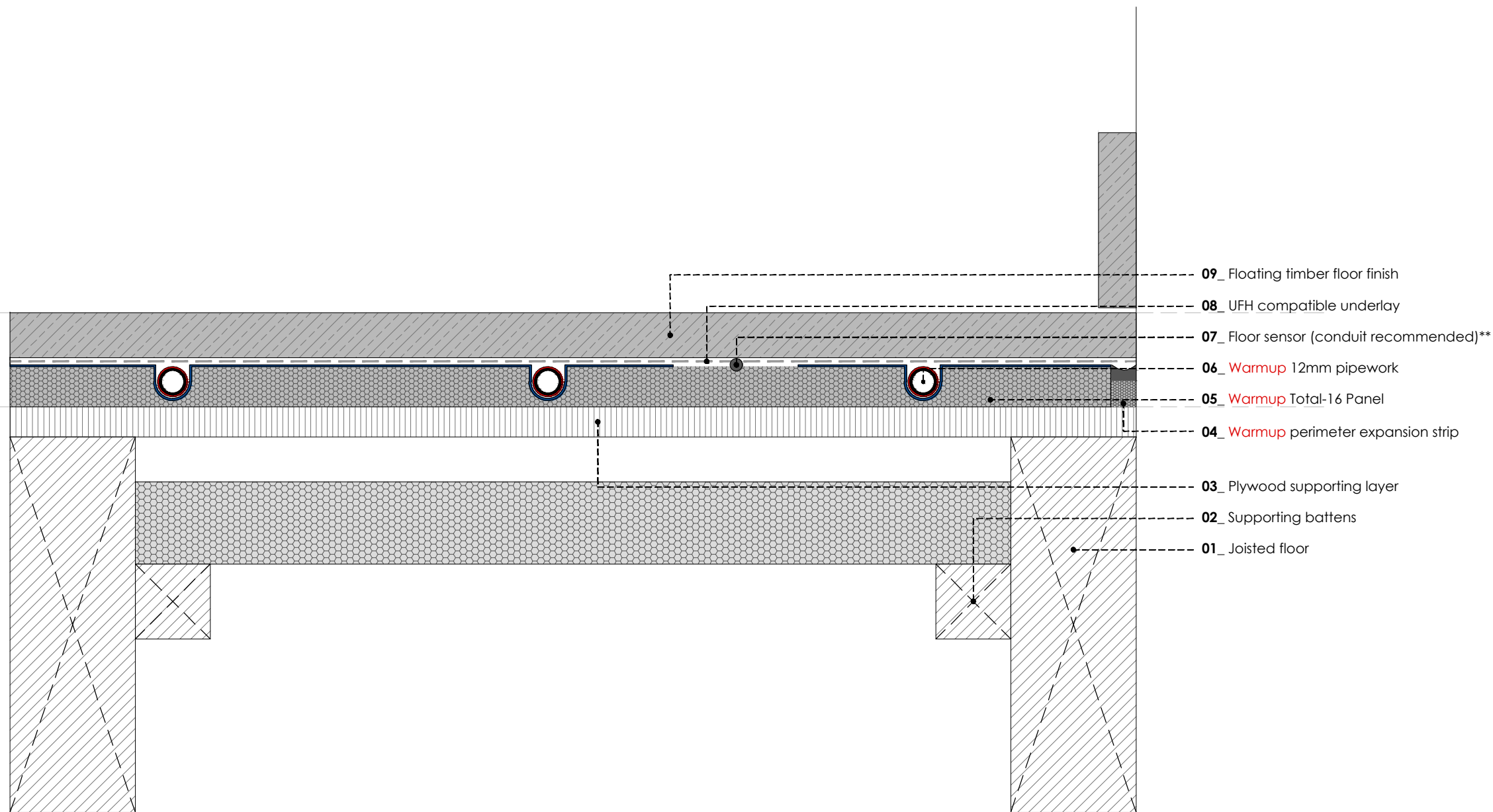
\* If rising damp is an issue use Warmup Adhesive (WHS-X-SEAL25) mixed with binder (WHS-X-BINDER) to adhere the boards to the subfloor. Do not use Warmup Glue (WHS-X-GLUE).

\*\* The aluminium plates should be trimmed to allow 50mm spacing between the sensor and the diffuser plates.

© This drawing is confidential and may not be used, copied or disclosed to anyone without permission of Warmup Plc. The Copyright of these drawings remain the property of Warmup Plc.

Do not scale from drawings, all dimensions to be checked on site.

The Warmup word and associated logos are trade marks. © Warmup Plc. 2010 - Regd. TM Nos. 1257757, 4409926, 5265707. E & OE. Registered in England No. 2955213.



REV	DATE	DESCRIPTION	DR	CH



# Warmup

The world's **best-selling** floor heating brand™

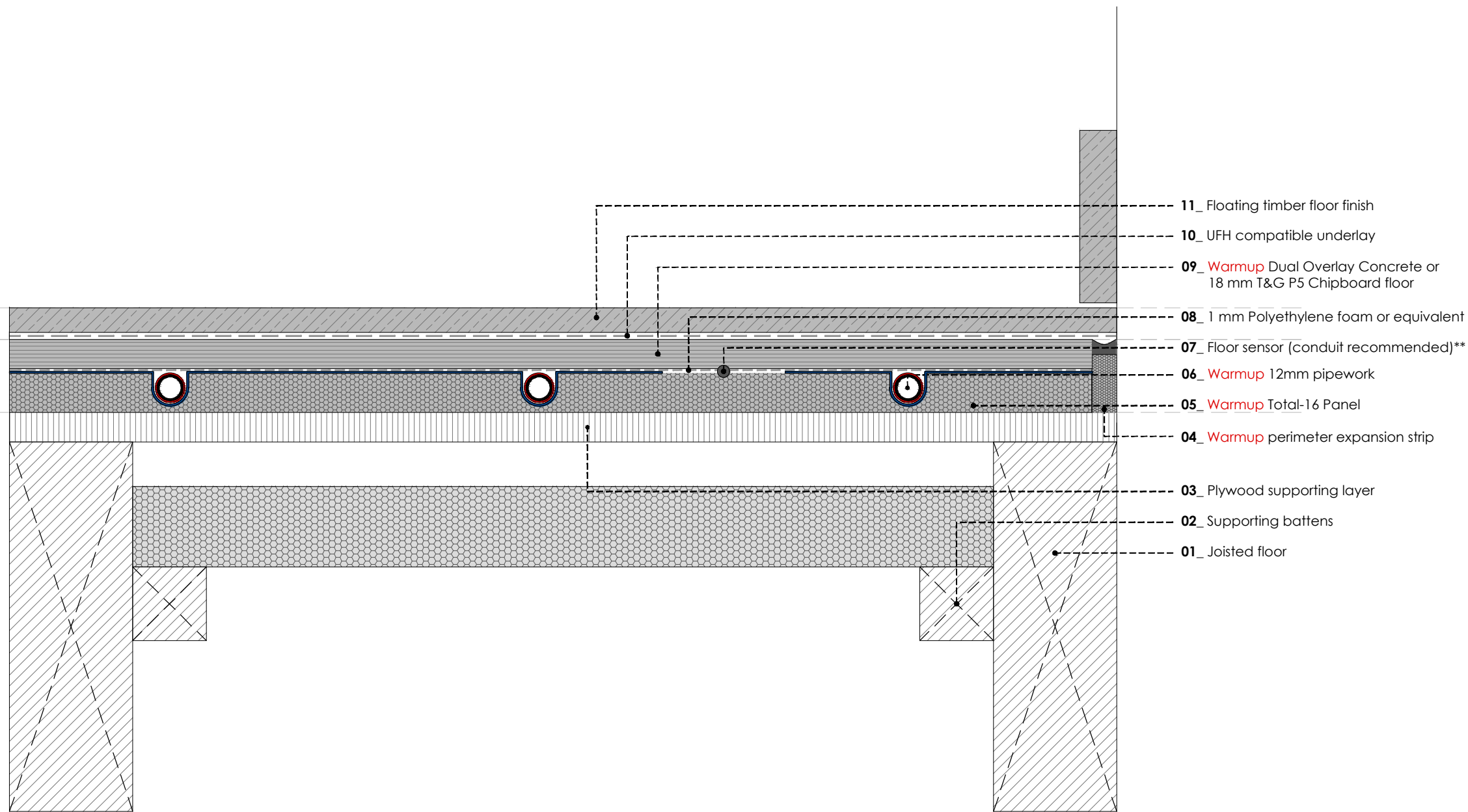
WARMUP PLC, 704 Tudor Estate, Abbey Road, London, NW10 7UW  
 Tel 0845 034 8270 Fax 0208 453 6869  
[cad@warmup.com](mailto:cad@warmup.com) [projects@warmup.com](mailto:projects@warmup.com) [www.warmup.co.uk](http://www.warmup.co.uk)

<b>DRAWING ISSUE STATUS</b>		<b>DRAWING NO</b>
<b>CONSTRUCTION</b>		13
<b>PROJECT</b>		
<b>TOTAL-16 LOW PROFILE SYSTEM</b>		
TIMBER SUBFLOOR		
<b>TITLE</b>		
14-25mm WOOD/LAMIN. FLOOR-FLOATING		
<b>DETAILED SECTION</b>		
<b>PROJECT MANAGER</b>	<b>DRAWN</b>	<b>CHECKED</b>
	AA	AW
<b>DATE</b>	<b>SCALE</b>	<b>REVISION</b>
24.02.2017	1:50@A3	
<b>CAD FILE</b>		
20170224-H-T16-DET SECTIONS.DWG		

**WARMUP TOTAL16. Timber subfloor. 14-25 mm Wood / Laminate floor - floating**

\*\* The aluminium plates should be trimmed to allow 50mm spacing between the sensor and the diffuser plates.

© This drawing is confidential and may not be used, copied or disclosed to anyone without permission of Warmup Plc. The Copyright of these drawings remain the property of Warmup Plc.  
 Do not scale from drawings, all dimensions to be checked on site.  
 The Warmup word and associated logos are trade marks. © Warmup Plc. 2010 - Regd. TM Nos. 1257757, 4409926, 5265707. E & OE. Registered in England No. 2955213.



- 11\_ Floating timber floor finish
- 10\_ UFH compatible underlay
- 09\_ Warmup Dual Overlay Concrete or 18 mm T&G P5 Chipboard floor
- 08\_ 1 mm Polyethylene foam or equivalent
- 07\_ Floor sensor (conduit recommended)\*\*
- 06\_ Warmup 12mm pipework
- 05\_ Warmup Total-16 Panel
- 04\_ Warmup perimeter expansion strip
- 03\_ Plywood supporting layer
- 02\_ Supporting battens
- 01\_ Joisted floor

REV	DATE	DESCRIPTION	DR	CH



# Warmup

The world's **best-selling** floor heating brand™

WARMUP PLC, 704 Tudor Estate, Abbey Road, London, NW10 7UW  
 Tel 0845 034 8270 Fax 0208 453 6869  
[cad@warmup.com](mailto:cad@warmup.com) [projects@warmup.com](mailto:projects@warmup.com) [www.warmup.co.uk](http://www.warmup.co.uk)

<b>DRAWING ISSUE STATUS</b>	<b>DRAWING NO</b>
<b>CONSTRUCTION</b>	14

**PROJECT**  
**TOTAL-16 LOW PROFILE SYSTEM**  
 TIMBER SUBFLOOR

**TITLE**  
 <14mm WOOD/LAMINATE FLOOR-FLOATING  
**DETAILED SECTION**

<b>PROJECT MANAGER</b>	<b>DRAWN</b>	<b>CHECKED</b>
	AA	AW

<b>DATE</b>	<b>SCALE</b>	<b>REVISION</b>
24.02.2017	1:50@A3	

**CAD FILE**  
 20170224-H-T16-DET SECTIONS.DWG

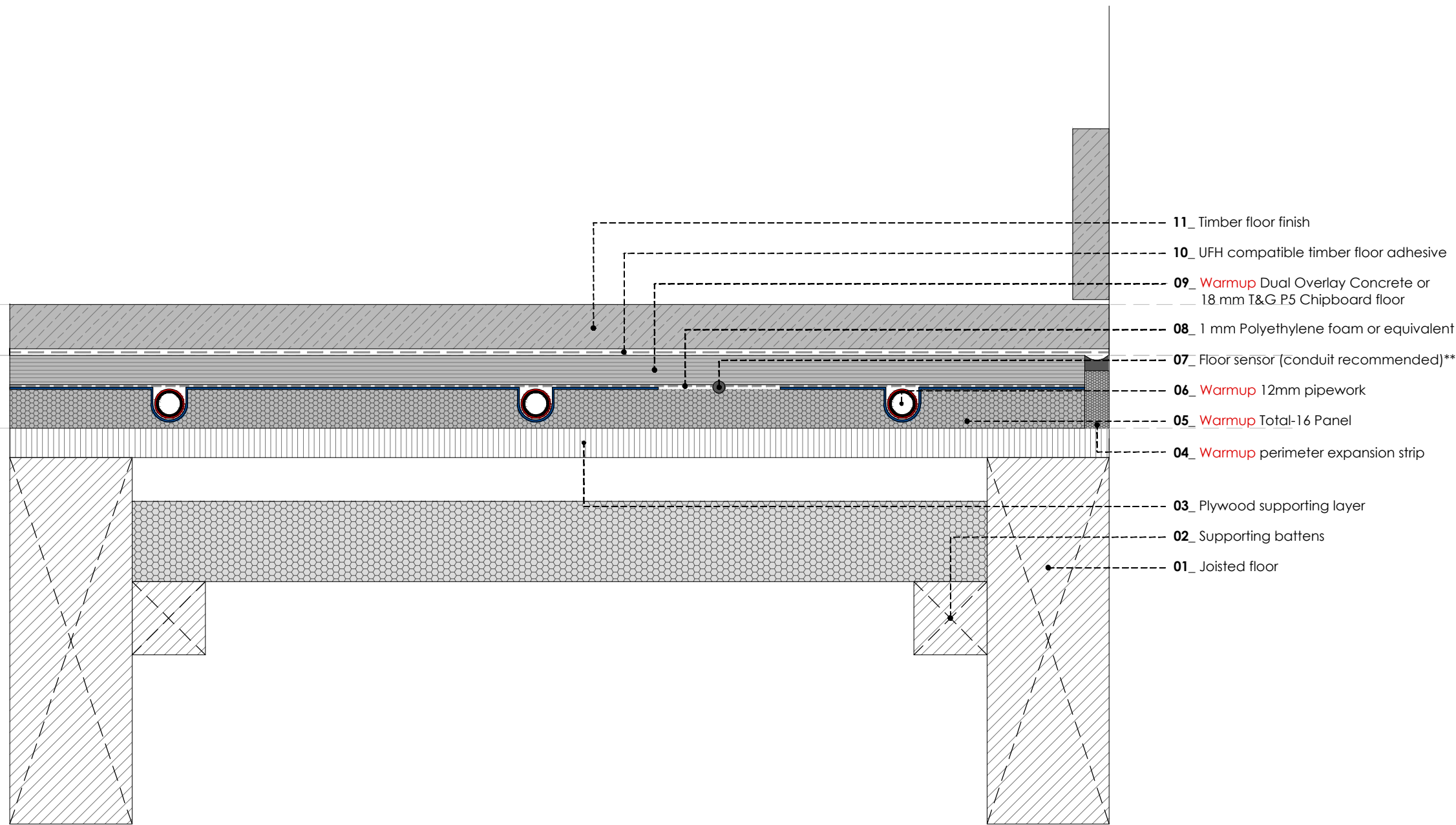
© This drawing is confidential and may not be used, copied or disclosed to anyone without permission of Warmup Plc. The Copyright of these drawings remain the property of Warmup Plc.

Do not scale from drawings, all dimensions to be checked on site.

The Warmup word and associated logos are trade marks. © Warmup Plc. 2010 - Regd. TM Nos. 1257757, 4409926, 5265707. E & OE. Registered in England No. 2955213.

**WARMUP TOTAL16. Timber subfloor. <14 mm Wood / Laminate floor - floating**

\*\* The aluminium plates should be trimmed to allow 50mm spacing between the sensor and the diffuser plates.



- 11\_ Timber floor finish
- 10\_ UFH compatible timber floor adhesive
- 09\_ Warmup Dual Overlay Concrete or 18 mm T&G P5 Chipboard floor
- 08\_ 1 mm Polyethylene foam or equivalent
- 07\_ Floor sensor (conduit recommended)\*\*
- 06\_ Warmup 12mm pipework
- 05\_ Warmup Total-16 Panel
- 04\_ Warmup perimeter expansion strip
- 03\_ Plywood supporting layer
- 02\_ Supporting battens
- 01\_ Joisted floor

REV	DATE	DESCRIPTION	DR	CH



# Warmup

The world's **best-selling** floor heating brand™

WARMUP PLC, 704 Tudor Estate, Abbey Road, London, NW10 7UW  
 Tel 0845 034 8270 Fax 0208 453 6869  
[cad@warmup.com](mailto:cad@warmup.com) [projects@warmup.com](mailto:projects@warmup.com) [www.warmup.co.uk](http://www.warmup.co.uk)

<b>DRAWING ISSUE STATUS</b>		<b>DRAWING NO</b>
<b>CONSTRUCTION</b>		15
<b>PROJECT</b>		
<b>TOTAL-16 LOW PROFILE SYSTEM</b>		
TIMBER SUBFLOOR		
<b>TITLE</b>		
WOOD/LAMINATE FLOOR-GLUED		
<b>DETAILED SECTION</b>		
<b>PROJECT MANAGER</b>	<b>DRAWN</b>	<b>CHECKED</b>
	AA	AW
<b>DATE</b>	<b>SCALE</b>	<b>REVISION</b>
24.02.2017	1:50@A3	
<b>CAD FILE</b>		
20170224-H-T16-DET SECTIONS.DWG		

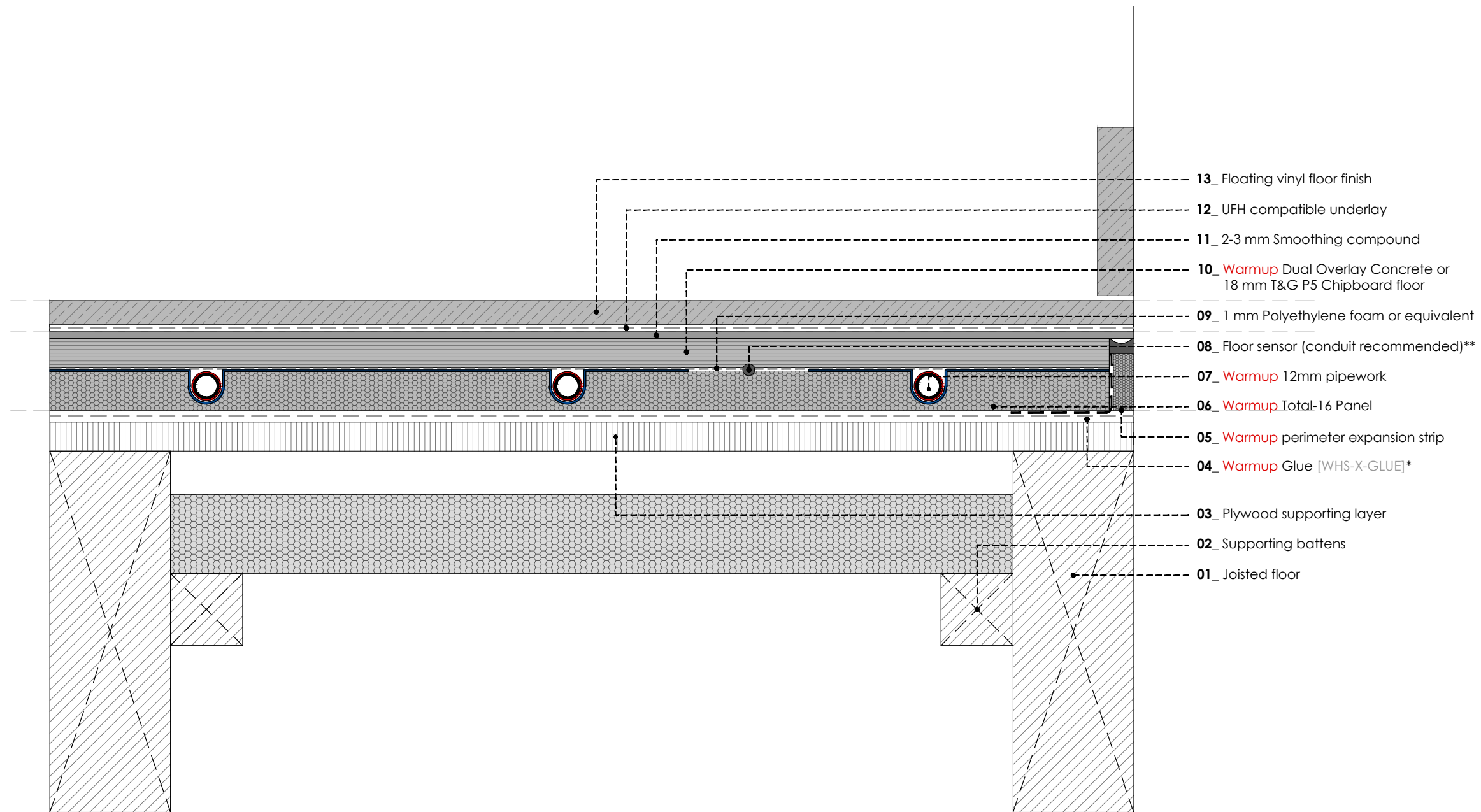
## WARMUP TOTAL16. Timber subfloor. Wood / Laminate floor - glued

\*\* The aluminium plates should be trimmed to allow 50mm spacing between the sensor and the diffuser plates.

© This drawing is confidential and may not be used, copied or disclosed to anyone without permission of Warmup Plc. The Copyright of these drawings remain the property of Warmup Plc.

Do not scale from drawings, all dimensions to be checked on site.

The Warmup word and associated logos are trade marks. © Warmup Plc. 2010 - Regd. TM Nos. 1257757, 4409926, 5265707. E & OE. Registered in England No. 2955213.



REV	DATE	DESCRIPTION	DR	CH



# Warmup

The world's **best-selling** floor heating brand™

WARMUP PLC, 704 Tudor Estate, Abbey Road, London, NW10 7UW  
 Tel 0845 034 8270 Fax 0208 453 6869  
[cad@warmup.com](mailto:cad@warmup.com) [projects@warmup.com](mailto:projects@warmup.com) [www.warmup.co.uk](http://www.warmup.co.uk)

<b>DRAWING ISSUE STATUS</b>		<b>DRAWING NO</b>
<b>CONSTRUCTION</b>		16
<b>PROJECT</b>		
<b>TOTAL-16 LOW PROFILE SYSTEM</b>		
TIMBER SUBFLOOR		
<b>TITLE</b>		
VINYL FLOOR - FLOATING		
<b>DETAILED SECTION</b>		
<b>PROJECT MANAGER</b>	<b>DRAWN</b>	<b>CHECKED</b>
	AA	AW
<b>DATE</b>	<b>SCALE</b>	<b>REVISION</b>
24.02.2017	1:50@A3	
<b>CAD FILE</b>		
20170224-H-T16-DET SECTIONS.DWG		

## WARMUP TOTAL16. Timber subfloor. Vinyl floor - floating

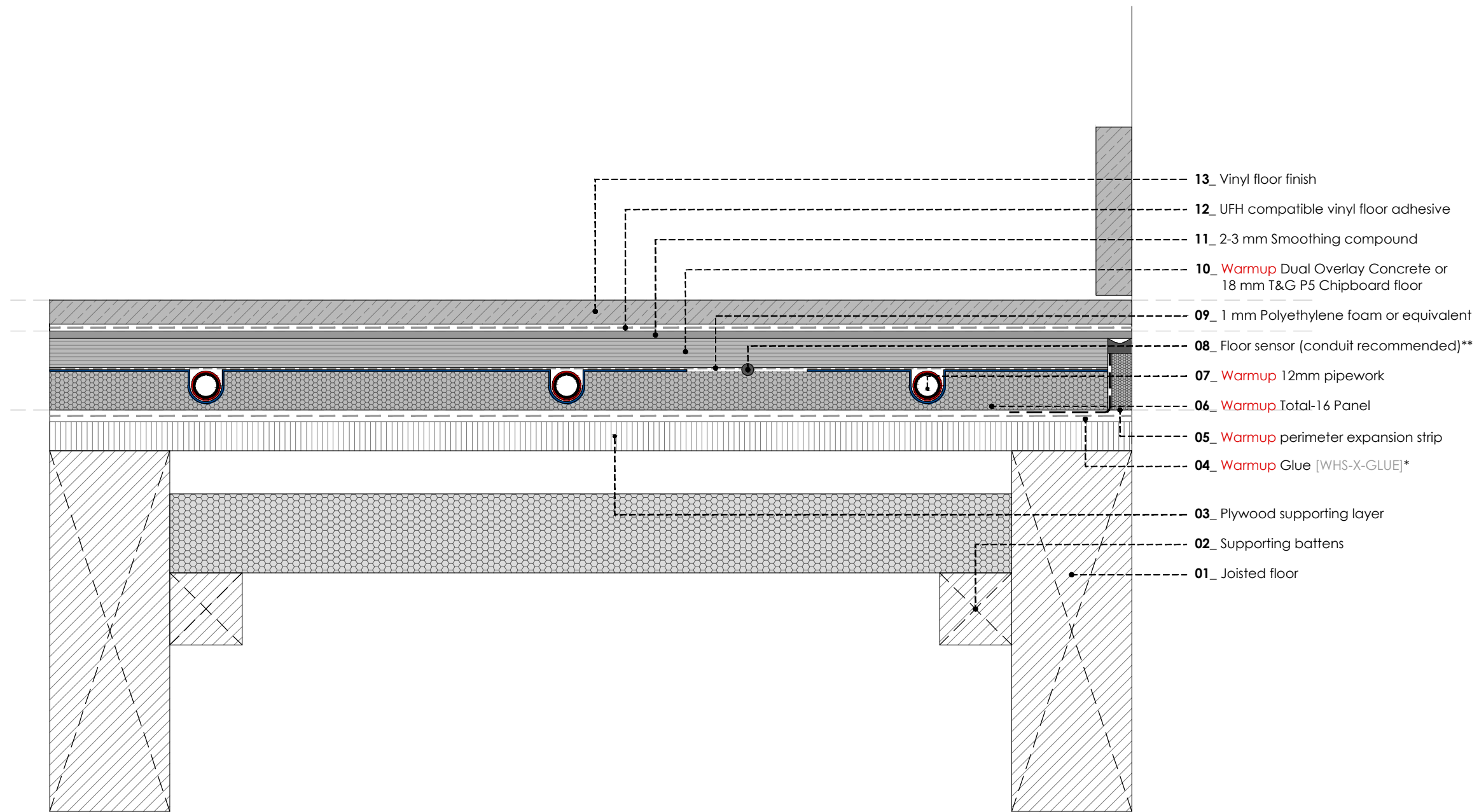
\* If rising damp is an issue use Warmup Adhesive (WHS-X-SEAL25) mixed with binder (WHS-X-BINDER) to adhere the boards to the subfloor. Do not use Warmup Glue (WHS-X-GLUE).

\*\* The aluminium plates should be trimmed to allow 50mm spacing between the sensor and the diffuser plates.

© This drawing is confidential and may not be used, copied or disclosed to anyone without permission of Warmup Plc. The Copyright of these drawings remain the property of Warmup Plc.

Do not scale from drawings, all dimensions to be checked on site.

The Warmup word and associated logos are trade marks. © Warmup Plc. 2010 - Regd. TM Nos. 1257757, 4409926, 5265707. E & OE. Registered in England No. 2955213.



REV	DATE	DESCRIPTION	DR	CH



# Warmup

The world's **best-selling** floor heating brand™

WARMUP PLC, 704 Tudor Estate, Abbey Road, London, NW10 7UW  
 Tel 0845 034 8270 Fax 0208 453 6869  
[cad@warmup.com](mailto:cad@warmup.com) [projects@warmup.com](mailto:projects@warmup.com) [www.warmup.co.uk](http://www.warmup.co.uk)

<b>DRAWING ISSUE STATUS</b>		<b>DRAWING NO</b>
<b>CONSTRUCTION</b>		17
<b>PROJECT</b>		
<b>TOTAL-16 LOW PROFILE SYSTEM</b>		
TIMBER SUBFLOOR		
<b>TITLE</b>		
VINYL FLOOR - GLUED		
<b>DETAILED SECTION</b>		
<b>PROJECT MANAGER</b>	<b>DRAWN</b>	<b>CHECKED</b>
	AA	AW
<b>DATE</b>	<b>SCALE</b>	<b>REVISION</b>
24.02.2017	1:50@A3	
<b>CAD FILE</b>		
20170224-H-T16-DET SECTIONS.DWG		

### WARMUP TOTAL16. Timber subfloor. Vinyl floor - floating

\* If rising damp is an issue use Warmup Adhesive (WHS-X-SEAL25) mixed with binder (WHS-X-BINDER) to adhere the boards to the subfloor. Do not use Warmup Glue (WHS-X-GLUE).

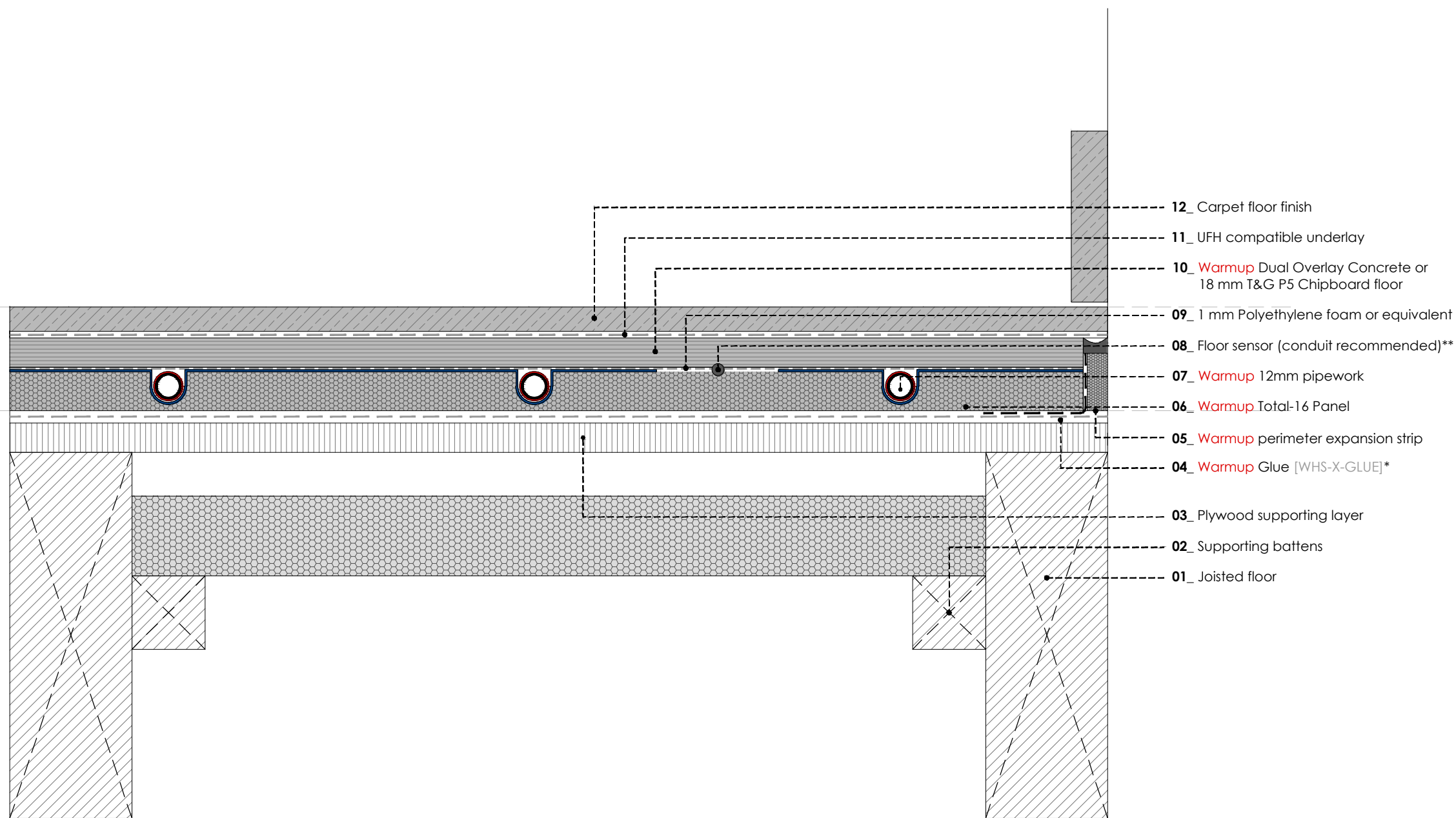
\*\* The aluminium plates should be trimmed to allow 50mm spacing between the sensor and the diffuser plates.

© This drawing is confidential and may not be used, copied or disclosed to anyone without permission of Warmup Plc. The Copyright of these drawings remain the property of Warmup Plc.

Do not scale from drawings, all dimensions to be checked on site.

The Warmup word and associated logos are trade marks. © Warmup Plc. 2010 - Regd. TM Nos. 1257757, 4409926, 5265707. E & OE. Registered in England No. 2955213.





REV	DATE	DESCRIPTION	DR	CH



# Warmup

The world's **best-selling** floor heating brand™

WARMUP PLC, 704 Tudor Estate, Abbey Road, London, NW10 7UW  
 Tel 0845 034 8270 Fax 0208 453 6869  
[cad@warmup.com](mailto:cad@warmup.com) [projects@warmup.com](mailto:projects@warmup.com) [www.warmup.co.uk](http://www.warmup.co.uk)

<b>DRAWING ISSUE STATUS</b>	<b>DRAWING NO</b>
<b>CONSTRUCTION</b>	18

**PROJECT**  
**TOTAL-16 LOW PROFILE SYSTEM**  
 TIMBER SUBFLOOR

**TITLE**  
 CARPET FLOOR  
**DETAILED SECTION**

<b>PROJECT MANAGER</b>	<b>DRAWN</b>	<b>CHECKED</b>
	AA	AW

<b>DATE</b>	<b>SCALE</b>	<b>REVISION</b>
24.02.2017	1:50@A3	

**CAD FILE**  
 20170224-H-T16-DET SECTIONS.DWG

© This drawing is confidential and may not be used, copied or disclosed to anyone without permission of Warmup Plc. The Copyright of these drawings remain the property of Warmup Plc.

Do not scale from drawings, all dimensions to be checked on site.

The Warmup word and associated logos are trade marks. © Warmup Plc. 2010 - Regd. TM Nos. 1257757, 4409926, 5265707. E & OE. Registered in England No. 2955213.

## WARMUP TOTAL16. Timber subfloor. Carpet floor

- \* If rising damp is an issue use Warmup Adhesive (WHS-X-SEAL25) mixed with binder (WHS-X-BINDER) to adhere the boards to the subfloor. Do not use Warmup Glue (WHS-X-GLUE).
- \*\* The aluminium plates should be trimmed to allow 50mm spacing between the sensor and the diffuser plates.