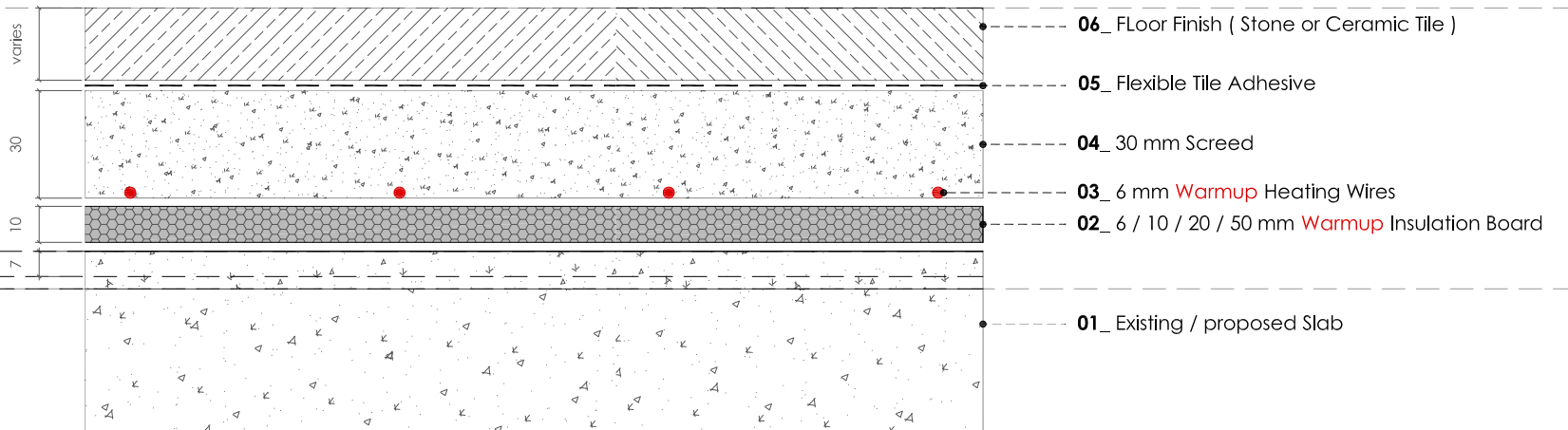


Proposed FFL

Existing Top of Screed
Varies

Existing FSL



WARMUP INSCREED HEATING WIRE

Warmup

The best underfloor heating - guaranteed™

WARMUP PLC, 702 Tudor Estate, Abbey Road, London, NW10 7UW
Tel 0845 034 8270 Fax 0208 453 6869
projects@warmup.com www.warmup.co.uk

© This drawing is confidential and may not be used, copied or disclosed to anyone without permission of Warmup Plc. The Copyright of these drawings remain the property of Warmup Plc. Do not scale from drawings, all dimensions to be checked on site. The Warmup word and associated logos are trade marks. © Warmup Plc. 2010 - Regd. TM Nos. 1257757, 4409926, 5265707, E & OE. Registered in England No. 2955213.

TITLE: WARMUP INSCREED HEATING WIRE

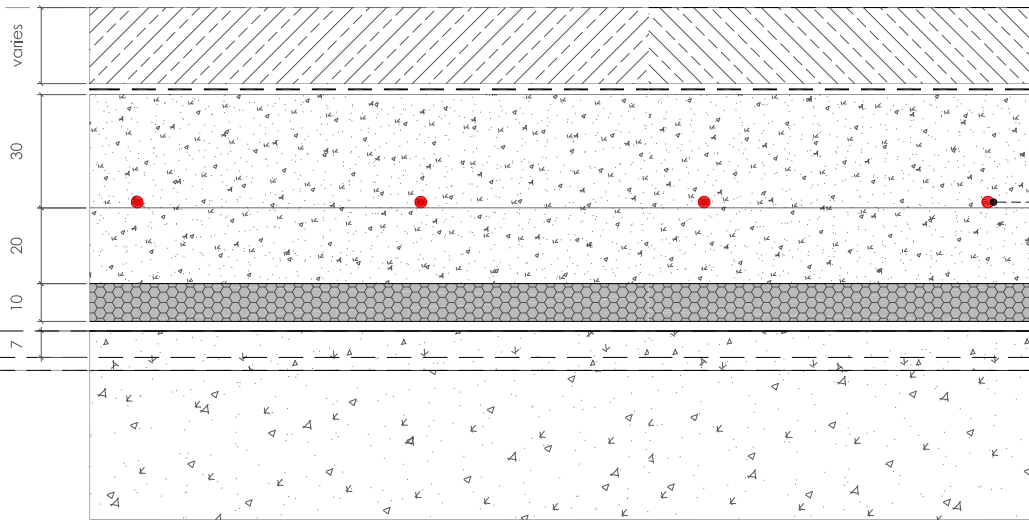
SCALE: 1:2_A4

DATE: 10.07 2014

DESIGNER: JC / VG

NUM: 09

Proposed FFL



- 07_ Floor Finish (Stone or Ceramic Tile)
- 06_ Flexible Tile Adhesive
- 05_ 30 mm Screed
- 04_ 6 mm Warmup Heating Wires
- 03_ 20 mm Screed
- 02_ 6 / 10 / 20 / 50 mm Warmup Insulation Board
- 01_ Existing / proposed Slab

Existing Top of Screed Varies



Existing FSL



WARMUP INSCREED HEATING WIRE



The best underfloor heating - guaranteed™

WARMUP PLC, 702 Tudor Estate, Abbey Road, London, NW10 7UW
Tel 0845 034 8270 Fax 0208 453 6869
projects@warmup.com www.warmup.co.uk

© This drawing is confidential and may not be used, copied or disclosed to anyone without permission of Warmup Plc. The Copyright of these drawings remain the property of Warmup Plc. Do not scale from drawings, all dimensions to be checked on site. The Warmup word and associated logos are trade marks. © Warmup Plc. 2010 - Regd. TM Nos. 1257757, 4409926, 5265707, E & OE. Registered in England No. 2955213.

TITLE: WARMUP INSCREED HEATING WIRE

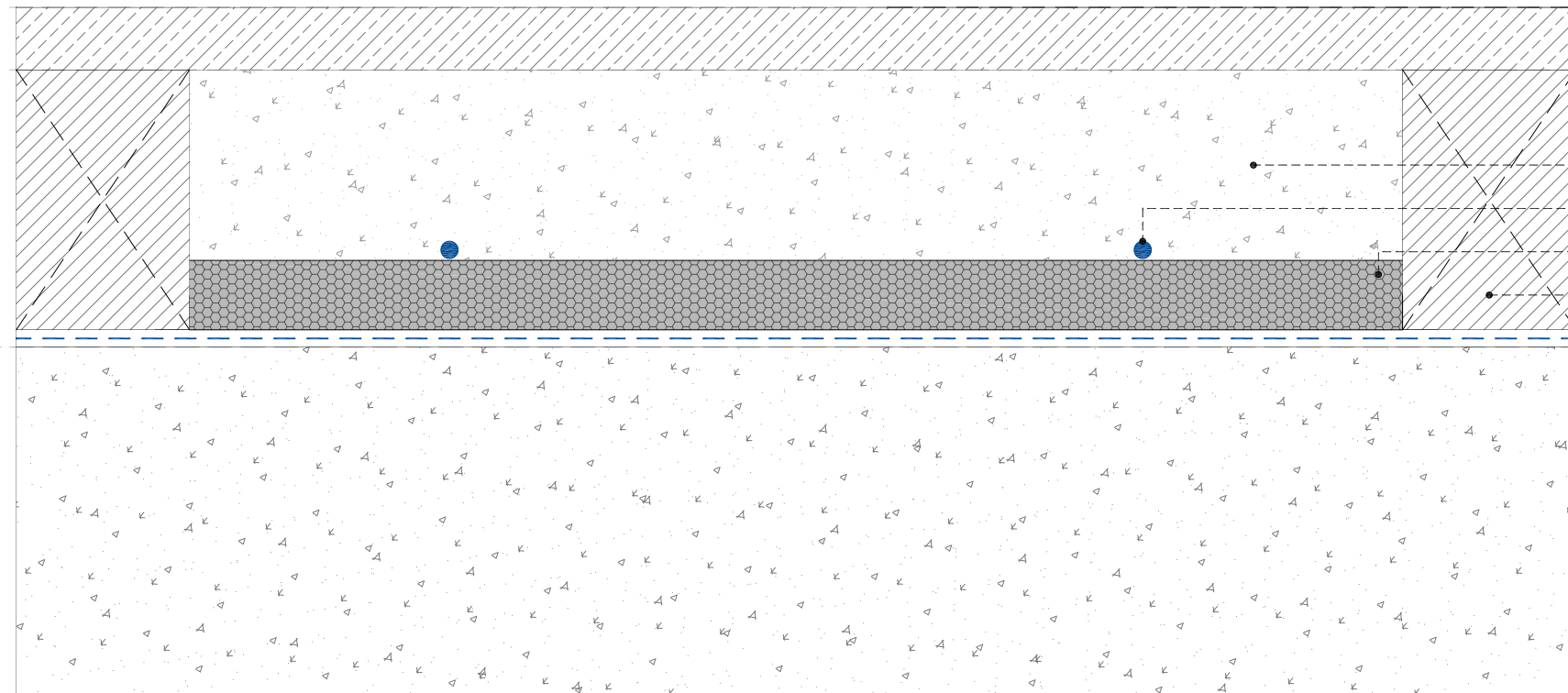
SCALE: 1:2_A4 DATE: 10.07 2014

DESIGNER: JC / VG NUM: 10



Proposed FFL

Existing FSL



- 07_ Floor finish: 18 mm T&G timber planks
- 06_ 55mm sand / cement screed
- 05_ 5 mm Warmup Inscreed Cable System
- 04_ 20 mm Warmup Coated Insulation Board
- 03_ 75x50 mm timber battens
- 02_ DPM
- 01_ Existing / proposed concrete slab

WARMUP INSCREED CABLE SYSTEM (p17)

Warmup

The world's **best-selling** floor heating brand™

WARMUP PLC, 702 Tudor Estate, Abbey Road, London, NW10 7UW
Tel 0845 034 8270 Fax 0208 453 6869
projects@warmup.com www.warmup.co.uk

© This drawing is confidential and may not be used, copied or disclosed to anyone without permission of Warmup Plc. The Copyright of these drawings remain the property of Warmup Plc. Do not scale from drawings, all dimensions to be checked on site. The Warmup word and associated logos are trade marks. © Warmup Plc. 2010 - Regd. TM Nos. 1257757, 4409926, 5265707. E & OE. Registered in England No. 2955213.

TITLE: WARMUP INSCREED CABLE SYSTEM

SCALE: 1.2_A3

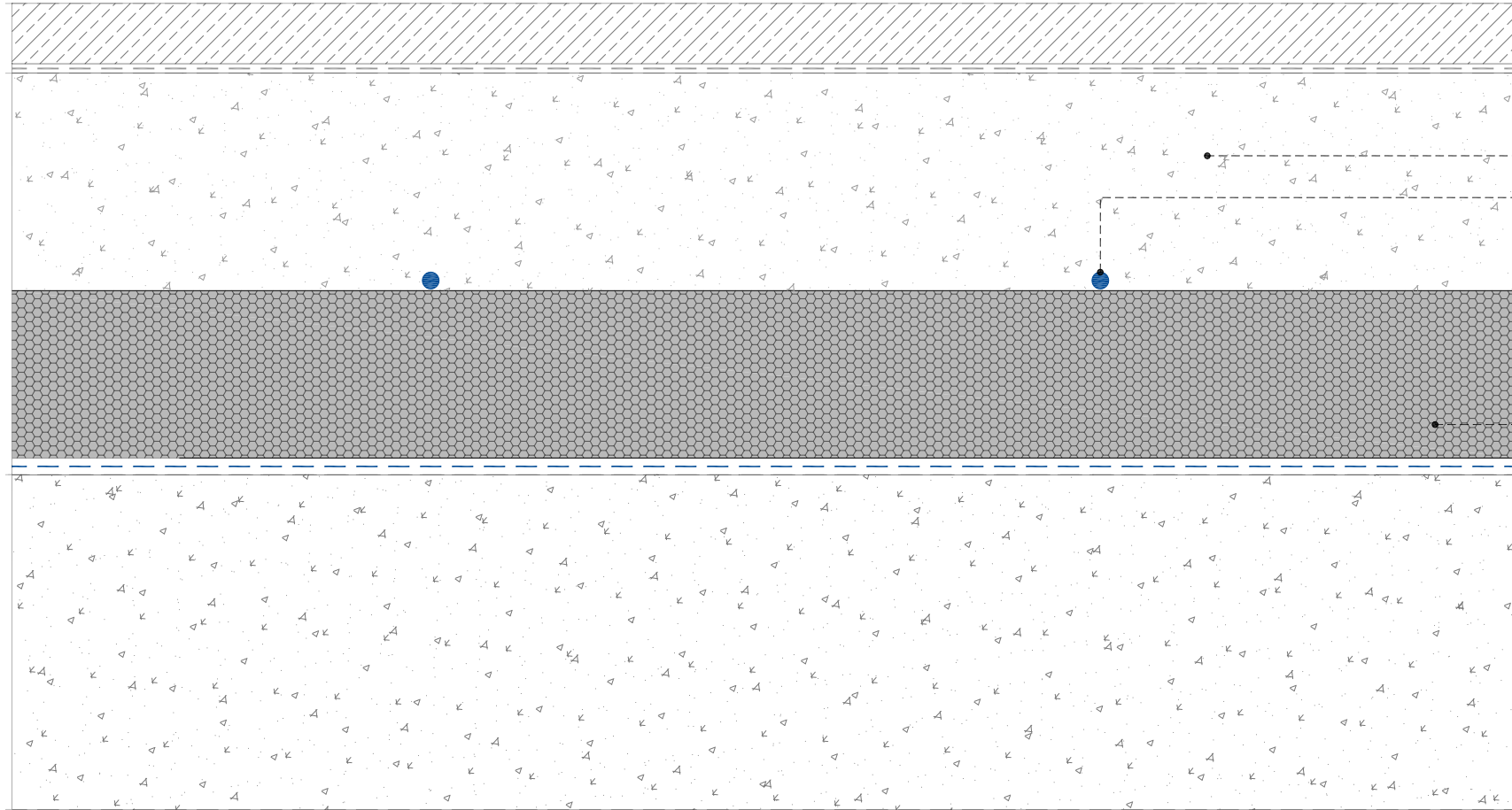
DATE: 08.10.2015

DESIGNER: AAM

VERSION: 01



Proposed FFL



- 07_ Floor finish: 18 mm T&G timber planks
- 06_ Timber floor adhesive
- 05_ 65mm sand / cement screed
- 04_ 5 mm Warmup Inscreed Cable System
- 03_ 50 mm Warmup Coated Insulation Board
- 02_ DPM
- 01_ Existing / proposed concrete slab

Existing FFL



WARMUP INSCREED CABLE SYSTEM (p21)



The world's **best-selling** floor heating brand™

WARMUP PLC, 702 Tudor Estate, Abbey Road, London, NW10 7UW
Tel 0845 034 8270 Fax 0208 453 6869
projects@warmup.com www.warmup.co.uk

© This drawing is confidential and may not be used, copied or disclosed to anyone without permission of Warmup Plc. The Copyright of these drawings remain the property of Warmup Plc. Do not scale from drawings, all dimensions to be checked on site. The Warmup word and associated logos are trade marks. © Warmup Plc. 2010 - Regd. TM Nos. 1257757, 4409926, 5265707. E & OE. Registered in England No. 2955213.

TITLE:	WARMUP INSCREED CABLE SYSTEM	
SCALE:	1.2_A3	DATE: 08.10.2015
DESIGNER:	AAM	VERSION: 01