

Perimeter strip

WHS-X-EDGE50

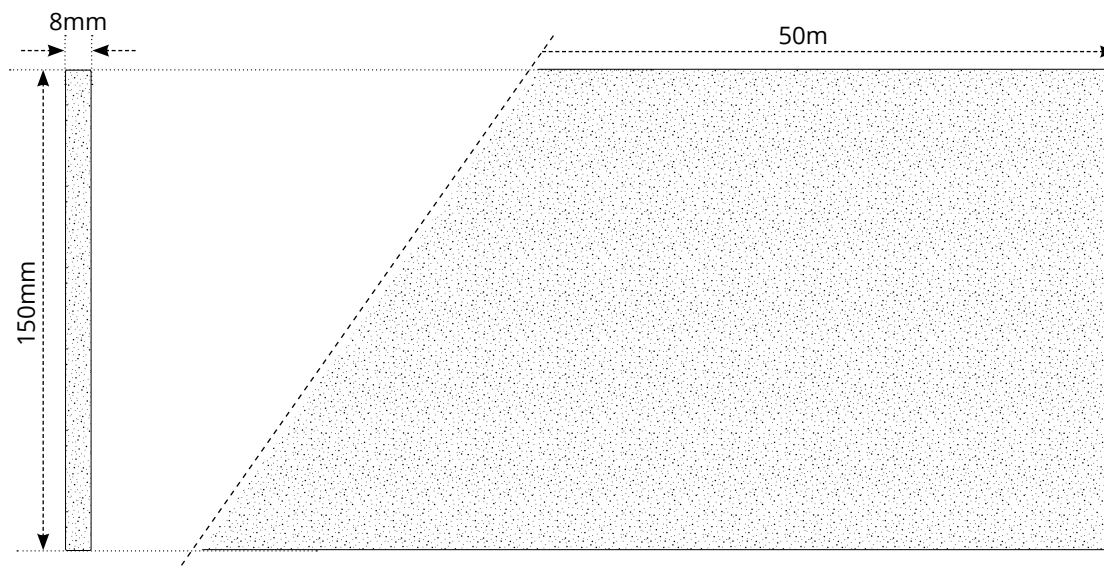


Overview

The perimeter strip with integrated polyethylene gaiter is installed around the perimeter of the room, along walls and doorways prior to a screed layer being poured over the installed underfloor heating pipework.

The perimeter strip insulates whilst also allowing for differential movement between the finished floor level and walls. This is important because buildings are subject to movement caused by a variety of factors, such as settling, temperature changes, and moisture fluctuations.

Dimensions



Contact

Warmup plc

www.warmup.co.uk T: 0345 345 2288

uk@warmup.com F: 0345 345 2299

Warmup plc ■ 704 Tudor Estate ■ Abbey Road ■ London ■ NW10 7UW ■ UK

Warmup GmbH ■ Ottostraße 3 ■ 27793 Wildeshausen ■ DE

Warmup - TS - Perimeter strip - V1.0 - 2023-05-04_EN

Warmup