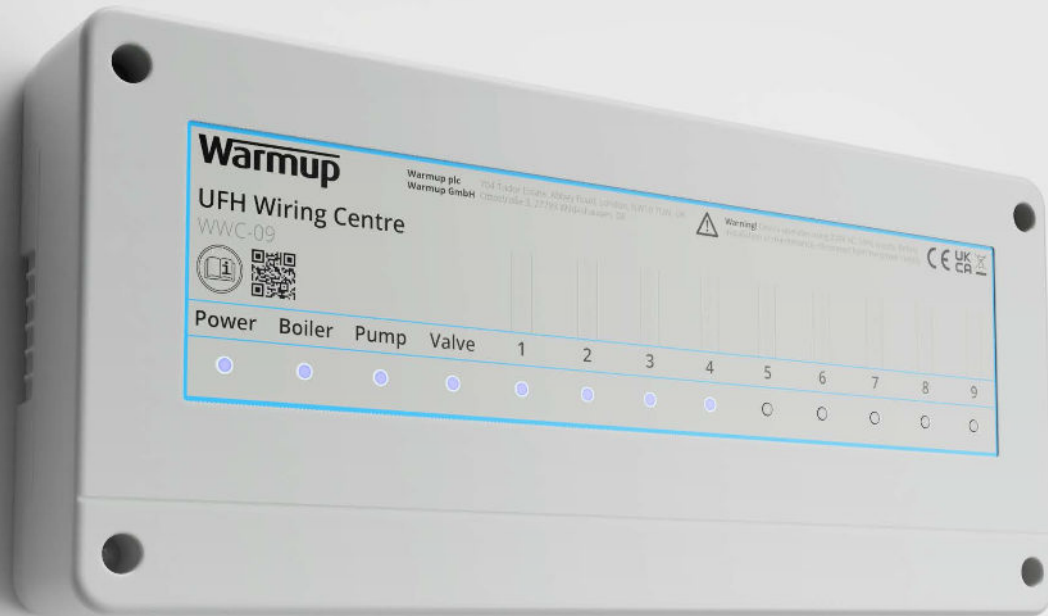


Warmup UFH Wiring Centre

WWC-09



Hybrid installations

Allows for installs of up to 9 UFH zones, with 2 of the zones being configurable to control radiators and domestic hot water.

Dedicated terminals

Warmup's Wiring Centre has dedicated wire terminals (open by default) including earth, orange and grey terminals for zone valves allowing for a faster, cleaner installation.

Commissioning switches for every zone

Simulates a call for heat in this zone to check the status of the actuator(s), valve, circulator and heat source allowing for prompt troubleshooting and maintenance.

Delayed start

Features a 90 second delayed start on the heat source to allow the UFH actuators to open fully, reducing energy wastage and preventing heat source short cycling.

Overview

Warmup's Wiring Centre has been expertly designed for a more efficient heating installation in projects of all sizes. The Wiring Centre allows for installs of up to 9 UFH zones, with 2 of the zones being configurable to control radiators and domestic hot water.

It features dedicated terminals, which are open by default, including earth, orange and grey terminals for zone valves allowing for a faster, cleaner installation. Each zone has a commissioning test switch which simulates a call for heat in this zone to check the status of the actuator(s), valve, circulator and heat source allowing for quick troubleshooting and maintenance.

Unlike other wiring centres on the market, Warmup's Wiring Centre provides an optional 90 second delay for the heat source, allowing the UFH actuators to open fully, which prevents short cycling and energy wastage, resulting in energy-savings for the end-user.

The Wiring Centre is compatible with all Warmup thermostats, S3 Mixing Unit and actuators for a fully integrated system. Additionally, if installed together the Wiring Centre comes with a market leading 12 year warranty.

Captive case screws x 4
Prevents lost screws

Installation manual QR-Code
Links to landing page
for country specific manuals

Room name markers
Allows each zone to be
labelled during installation

Warmup
UFH Wiring Centre
WWC-09

Power Boiler Pump Valve 1 2 3 4 5 6 7 8 9

**90 second delayed
start function**

Allows time for slow acting
actuators to fully open

**Wall mounting
location x 4**

Includes 4 wall screws & plugs
(+ extra set)

LED indicators

Shows each output(s)
activity for easier
diagnostics

Fuse

F 2A L 250V
(+ 1 extra)

Power supply terminals

230 V AC; 50Hz

Heat source terminals

Circulator terminals

Zone valve terminals

Remove zone valve bridge if
connecting a zone valve

Zone test switches

Simulates a call for heat in this zone
to check the status of the actuator,
valve, circulator and heat source

Zone valve bridge

Actuator 1/2 terminals

Can be used to control
underfloor heating, hot water /
radiator circuits

DIN rail clips x2

**Reversible cable strain
relief clamps x7**

**Zones 1-9 thermostat /
programmer terminals**

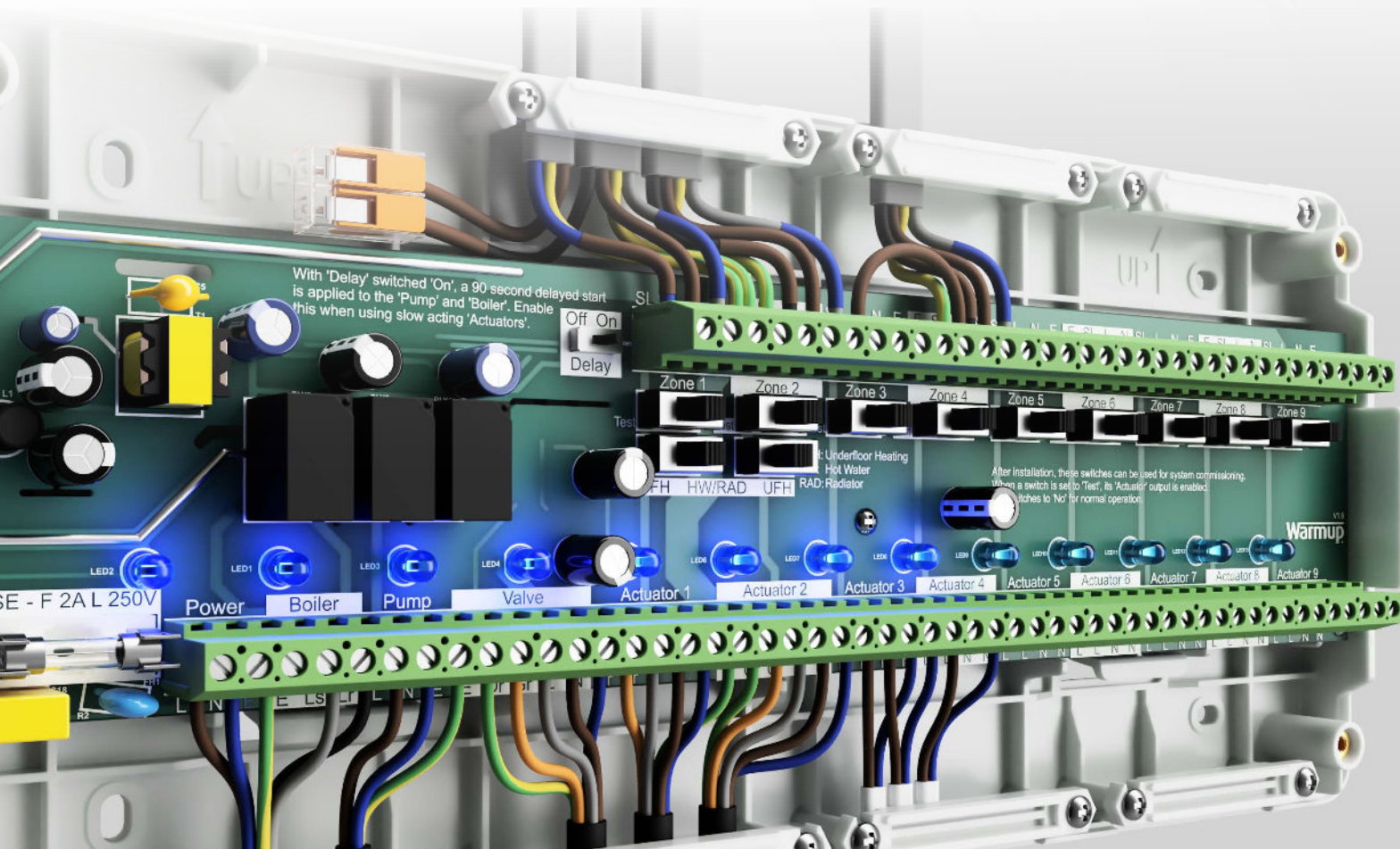
Thermostat connections for
underfloor heating / radiators or
programmer for hot water

Zone 1/2 mode selects

Switch between underfloor
heating, hot water / radiator

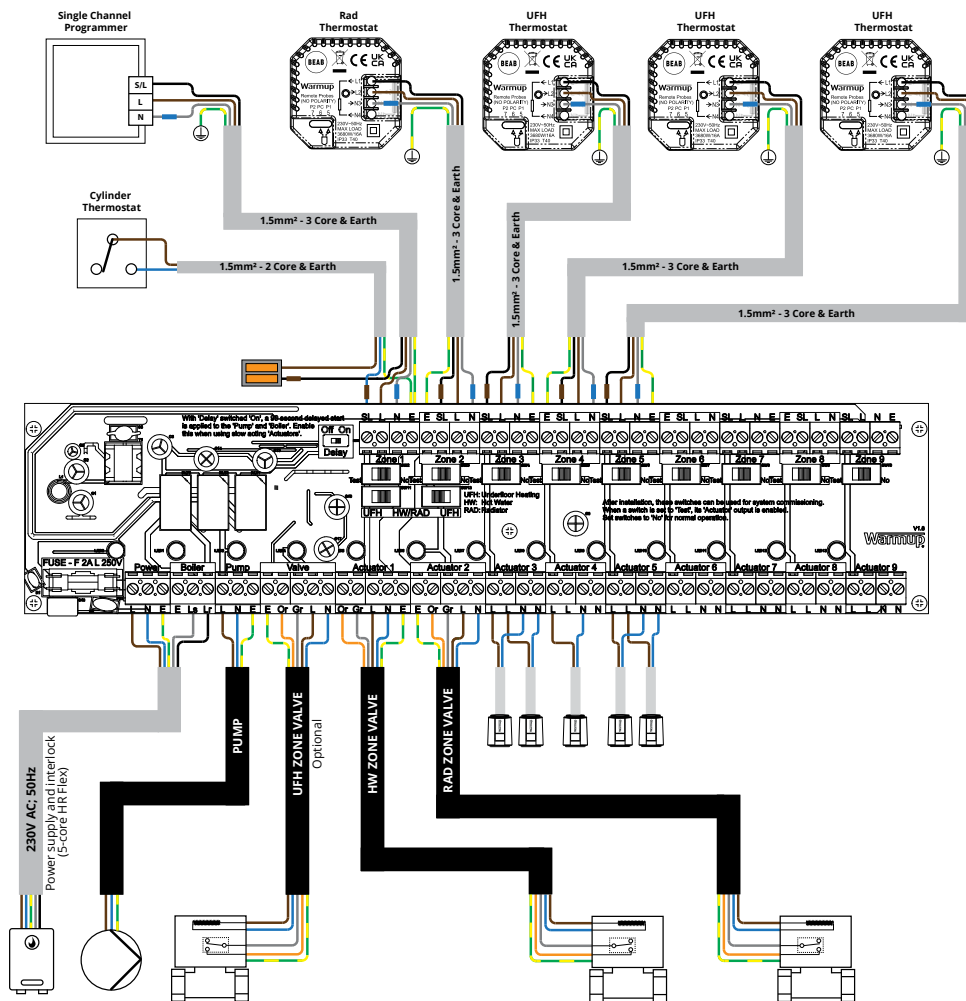
Actuator 3-9 terminals

For connection to
underfloor heating
actuators

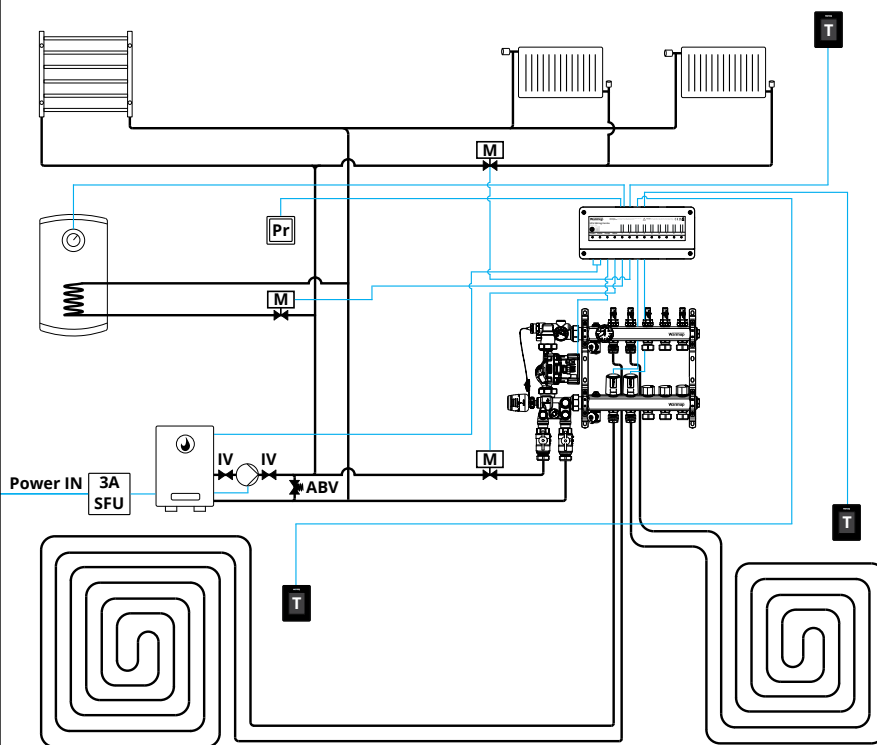


Typical installation

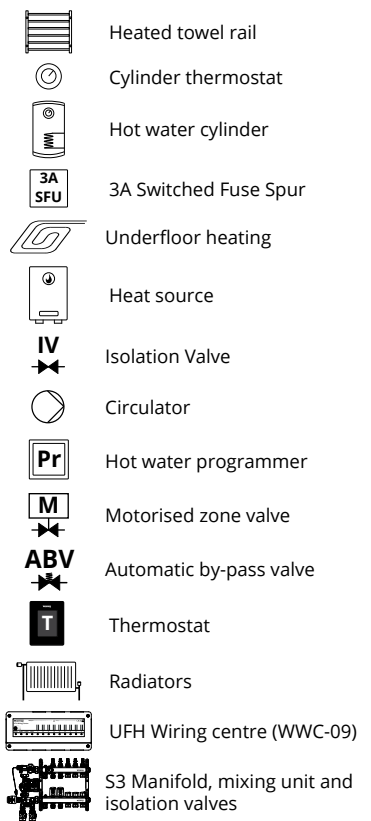
Wiring schematic



Plumbing schematic



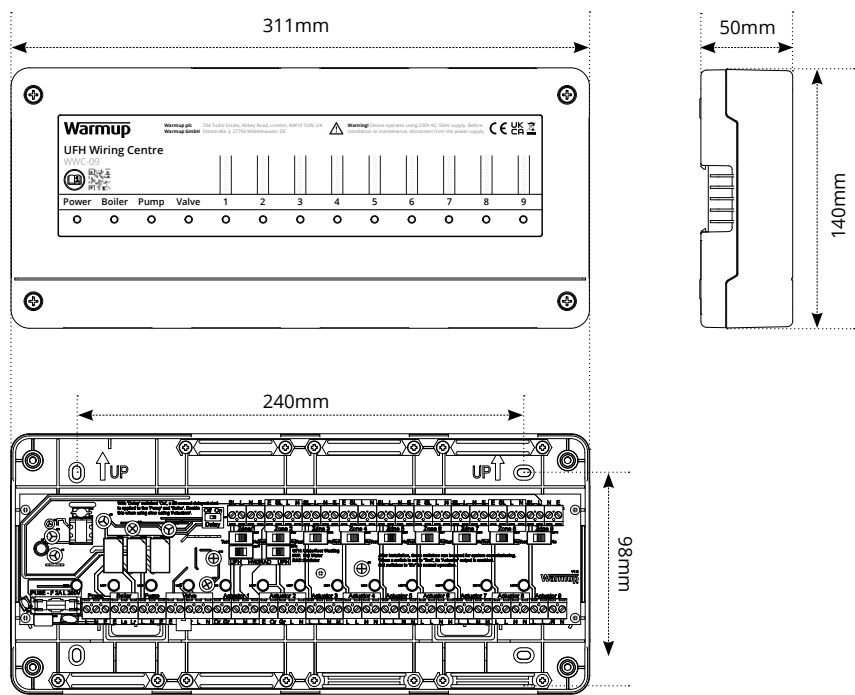
Legend



Technical specifications

UFH Wiring Centre (WWC-09)			
Operating voltage	230V AC; 50Hz	Max. of hybrid zones	2 (HW/RADS)
Max. total load	2A resistive	Max. Load Outputs	Boiler 3A Resistive
Overload protection	3A (Use external 3A MCB's, RCBO's or fuses for this purpose)		Pump 0.6A Resistive (0.6A inductive resistance of the motor)
Fuse	F 2A L 250V 5x20mm		Valve 0.2A Resistive
Protection	Class I		Actuators 0.1A Resistive
IP rating	IP20	Storage temperature	-10°C to +50°C
Operating temperature	0 - 45°C, T45	DIN-rail mounting	Yes
Wire size	1.0 - 2.5mm ²	Commissioning switches	9
Max. number of zones	9	Delayed start	90 seconds; switchable

Dimensions



Contact

Warmup plc
www.warmup.co.uk T: 0345 345 2288
uk@warmup.com F: 0345 345 2299

Warmup plc ■ 704 Tudor Estate ■ Abbey Road ■ London ■ NW10 7UW ■ UK
Warmup GmbH ■ Ottostraße 3 ■ 27793 Wildeshausen ■ DE